



ECA COLLEGE OF  
HEALTH SCIENCES



# POSTGRADUATE COURSE GUIDE - 2024

SYDNEY | BRISBANE



# Content

Welcome Message	01
Study and Learning Experience	04
Living in Australia	05
Sydney and Brisbane Campuses	09
Sydney Public Transportation	11
Brisbane Public Transportation	12
Support Services	13
Admission Requirements	15
Healthcare Overview	17
Career Outlook	18
Graduate Certificate in Health Management	19
Graduate Diploma in Health Management	20
Master of Health Management	21
Pathway And Recognition of Prior Learning	22
How to Apply	23



# Welcome Message

## Welcome to the ECA College of Health Sciences,

I am delighted to welcome you to the ECA College of Health Sciences. The college is an excellent choice to achieve your management and leadership education and build strong foundations for a successful career in the healthcare sector. At CHS we are committed to providing an outstanding student experience that supports the development of academic and professional capital, skills and capabilities to enable you to thrive as a student and graduate of the college. We provide a friendly, encouraging, and supportive campus environment- we will be with you from the beginning of your journey as you gain your qualification, build new networks, find new friends, and develop your leadership skills. Thank you for choosing CHS. We look forward to welcoming you to our college.



Sincerely,

**Dr Mohamed Khalifa**

Director of Studies, ECA College of Health Sciences





## Accreditation

The Tertiary Education Quality and Standards Agency (TEQSA) has approved CHS as a registered Institute of Higher Education and accredited its courses.

**CRICOS Code and Provider Number:** 03932J | PRV: 14334

**Provider Category:** Institute of Higher Education

## Equity, Diversity & Inclusion at CHS

CHS provides a welcoming collegial environment with policies and processes which support all staff and students regardless of gender, age, race, disability, orientation or ethnic background. CHS has zero-tolerance for discrimination, harassment and assault in all its forms.

CHS recognises and celebrates diversity including supporting the LGBTIQ + Inclusion community.

**Ally Network** - The Ally network comprises staff and students to develop, plan and create action plans to support the LGBTIQ + community and engage in social events.

## Indigenous Support



CHS is committed to making a contribution through its educational programs to 'Closing the Gap' by reducing disadvantages entrenched towards Aboriginal and Torres Strait Islander people with respect to life expectancy, child mortality, access to early childhood education, educational achievement, and employment outcomes. To achieve this commitment, CHS will align its activities to the five dimensions of reconciliation developed by Reconciliation Australia regarding: race relations, equality and equity, unity, institutional integrity, and historical acceptance. CHS is committed to making its educational programs accessible to the Australian Indigenous community in order to contribute to:

- Improving Australian Indigenous postgraduate progression and completion rates to levels commensurate with those of other Australians
- Increase Indigenous participation in the life of the College
- Collaborate with Indigenous people to ensure the inclusion of appropriate Indigenous content in curriculum across CHS programs where relevant
- Acknowledge Indigenous culture across CHS operations where appropriate
- Foster Indigenous awareness and encourage student projects on Indigenous health to promote Indigenous health and welfare



## Disability Support

CHS is aware that the best means of dealing with entrenched attitudes towards people with disabilities is through education and promotion of exemplary conduct that can lead to greater social cohesion within the College community. CHS is committed to making reasonable adjustments to meet the needs of students and staff with disabilities. CHS promotes an environment that values diversity and inclusiveness. CHS is committed to attending to the needs of individual students with disabilities in terms of facilitating their participation in the CHS's workplace, educational programs and events as far as practicable.

## Cultural Diversity

CHS will celebrate cultural diversity through a range of events and activities, including:

- Celebrating days of Cultural Significance to support understanding of the many faiths, cultures and ethnicities that compose the contemporary Australian society
- Providing Cultural Orientation Programs
- Connecting with students and staff to share expertise in cultural diversity and developing multicultural events throughout the year

## Low Socio-Economic Background (Domestic Students Only)

Educational disadvantage is a reality faced by many Indigenous students and also by students from low socio-economic backgrounds. CHS is committed to making a contribution to this group by:

- Giving equal opportunities around the access students have to resources and facilities available to students, as well as to effective teachers
- The scholarship is given to selected students from low socio-economic backgrounds based on merit
- Alternative pathways to admission into the courses offered by CHS



# Study and Learning Experience

## In-Depth Learning and New Insights

Learn and develop new insights from our leading academics and industry practitioners.

## Adult Learning Principles

The courses have been designed based on 'andragogy' and specifically the six principles of adult learning. The principles suggest adult students are:

- Motivated to learn
- Not a 'blank slate' but bring to their knowledge, professional and life experiences
- Focused and goal oriented
- Practical and appreciate being respected as a person, and
- A contributor that wants learning that is relevant to their tasks and learning outcomes.



## Affordability

CHS understands that tuition fees are an important consideration when students choose their course and education provider. CHS provides competitive tuition fees with financial support/assistance for their students.

## Flexibility

You can tailor your timetable to fit your studies around other commitments. Please see CHS course profile page for further information.

## Student Support

As a college within the ECA Group has a reputation for student support and services we will provide quality services and personalised support to all of our students. We appreciate the need to give our students every support they need to succeed.

# Living in Australia

## About Sydney

- Sydney is one of Australia's most popular destinations for higher education international students.
- The city is home to many government institutions as well as world-renowned private colleges delivering skills training in key areas.




Sydney is set on the iconic Sydney harbour and surrounded by some of the country's best beaches, places to see and great food and drink. With residents originating from across the globe, Sydney's dining scene serves up the diverse flavors of Asia, Europe and beyond.

Sydney is home to world-class institutions which deliver cutting edge, industry-relevant education that launches domestic and international students into careers of choice. It is linked with leading global industry and research networks to develop world class talent equipped with the knowledge, skills to be 'work ready' upon graduation. Successful graduates from

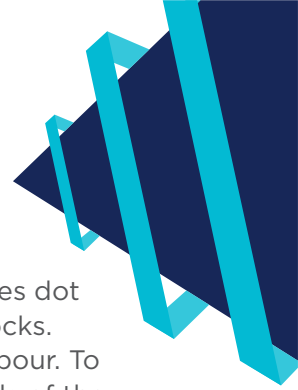
Australian institutes are working at the highest levels in government and business all across the world.

## Sydney Climate

Sydney enjoys a sunny climate with mild winters and warm summers, perfect for making the most of the outdoors.

	SUMMER			AUTUMN			WINTER			SPRING		
	Dec	Jan	Feb	Mar	Apr	May	Jun	Jul	Aug	Sep	Oct	Nov
 Maximum temp °C	25.7	26.4	26.3	25.2	22.9	20	17.6	17	18.3	20.5	22.5	24
 Minimum temp °C	17.5	18.8	19	17.5	14.1	10.9	8.6	7.1	8.1	10.3	13.1	15.3
 Avg rainfall mm	74	94	113	115	106	101	120	69	77	61	72	81





# Things to do in Sydney

## ● Sydney Harbour

Is considered one of the world's most beautiful harbours. Secluded beaches and quiet coves dot the harbour and the water is covered in sailboat or cruise; ships' waves their way to the docks. Circular Quay is the launch point for ferries to Manly and sightseeing tours around the harbour. To one side of the Quay lays the historic site of The Rocks, and on the other are the iconic sails of the Sydney Opera House. Sydney Harbour forms the backdrop to a number of spectacular events staged on or around this waterway including Vivid Sydney and New Year's Eve when light installations are set up from the Sydney Opera House through Circular Quay to The Rocks and Walsh Bay.

## ● Bondi to Coogee Beach Coastal Walk

This is a well-maintained and wonderful walk for the whole family—but allow an afternoon for it! You can take your time and leisurely stroll along this gorgeous trail (although there are several changes in elevation so being in moderate shape might help on the hills). I would recommend wearing layers because it can vary from being warm enough for shorts and a t-shirt one minute to cool and breezy the next as you move into and out of shady spots. If you get too warm you can always stop for a swim at Bondi, Tamarama, Bronte or Coogee beaches, and there are a number of water fountains and even a few cafes along the way if you get thirsty. It's approximately a 6km walk which takes around 2 hours at a good pace. Don't forget your hat and sunscreen!

## ● Sydney Opera House to the Botanic Gardens Walk

If you're looking for a very leisurely and well-maintained walk along the water, then this is the one for you. Some people might consider it a bit of a long walk (I'd recommend bringing some water), but on a beautiful day it is great to get outdoors! There are spectacular views along the walk and once you reach Mrs. Macquarie Point you have a sweeping view of the Opera House and the Sydney Harbour Bridge—perfect for a photo op. If you do this walk early in the morning or late in the day you might even catch a beautiful sunrise or sunset. Just make sure you grab your comfortable walking shoes!

## ● Sydney Opera House to Royal Botanic Gardens Walk

You can't come to Sydney and not check out the beautiful Royal Botanic Gardens! These gardens are an absolute must-see and are situated on the shores of Sydney Harbour, right by the Sydney Opera House. These are the oldest botanic gardens in Australia. Its collection of plants comes from around the world but there is a focus on species from Australia and the South Pacific. There are plenty of things to do at the Gardens, such as free guided walks that leave from the Visitor Information Centre, daily at 10:30am and Monday - Friday at 1pm.

## ● Sydney Harbour Bridge Walk

This Top 5 list wouldn't really be complete without the Sydney Harbour Bridge, the most famous bridge in Australia! It's located exactly opposite the Sydney Opera House and spans the city centre to the North Shore. This bridge is both functional and beautiful and the more daring can experience a climb to the top with Bridge Climb. If that's not your thing, take a lovely walk along the bridge or enjoy magnificent views from the Pylon Lookout.





# About Brisbane

Brisbane is the capital of Queensland and hosts the vast majority of international students with 7 of the 10 Queensland universities operating campuses here.

Brisbane hosts Australia’s largest city orientation day for international students, the Brisbane Welcomes International Students Festival, with over 8,000 students participating each year. With a population of 2 million, Brisbane is Australia’s fastest-growing capital city for employment and offers a great range of opportunities in both the public and private sectors. Brisbane City Council offers free Wi-Fi at 22 of its most popular parks and students can also get free movies through the city’s Shade Cinema initiative. This downloadable app lets students watch a selection of movies at one of the city’s parks and gardens for free!

Brisbane’s Lord Mayor hosts regular Lord Mayor’s International Student Friendship Ceremonies, giving all international students the chance to receive a personally-signed certificate of friendship from the City of Brisbane.

Brisbane is home to over 177 major resource and energy companies and is a growing hub for supplying resources to the world.

Socially, economically and educationally, Brisbane is truly Australia’s ‘new world city’.



## Brisbane Climate

Brisbane enjoys a subtropical climate, defined by warm or hot weather for most of the year. Don’t be surprised if you see people wearing light clothes such as short sleeves and shorts; as well as sunscreen and a pair of sunglasses all year-round.

	SUMMER			AUTUMN			WINTER			SPRING		
	Dec	Jan	Feb	Mar	Apr	May	Jun	Jul	Aug	Sep	Oct	Nov
Maximum temp °C	28.6	29.1	28.9	28.1	26.3	23.5	21.2	20.6	21.7	23.8	25.6	27.3
Minimum temp °C	19.8	20.9	20.8	19.5	16.9	13.8	10.9	9.5	10	12.5	15.6	18
Avg rainfall mm	126	158	172	139	90	99	71	63	43	35	94	97

# Things to do in Brisbane



- **Climb Brisbane's Story Bridge... and Abseil Down**

Brisbane's must do experience, the Story Bridge Climb is a truly unique and memorable adventure for everyone. The Story Bridge Climb is a soft most adventure experience with a difference, and the spectacular way to discover Brisbane. You'll be exhilarated by a once in a lifetime experience that offers you the most breathtaking panorama of Brisbane and its surrounding natural beauty.

- **Walk through Brisbane's Entertaining South Bank**

Walk or cycle around South Bank on the Brisbane River and see the best of the city while you exercise. Famous for its diverse mix of entertainment, recreation and leisure activities, South Bank includes 17 hectares of parklands, restaurants, cafes, bars, boutiques, museums and galleries. For a fun perspective, take a ride on the Wheel of Brisbane.

- **Lay on the Beach in the Middle of Brisbane City**

Experience the Aussie beach vibe in the heart of the city. This fully patrolled, man-made beach is free to use and boasts a sparkling lagoon surrounded by white sand and sub-tropical plants. Relax with an ice cream, have a swim and soak up the famous Queensland sunshine. Nearby Aquativity is a fun, interactive water-play park, ideal for young families.

- **Soak up the Art at GoMA and the Queensland Art Gallery**

Explore GoMA, Australia's largest gallery of modern and contemporary art and the iconic Queensland Art Gallery. The galleries are architectural wonders themselves, boasting a diversity of Australian and international art as well as two galleries devoted to contemporary Indigenous work. Friday nights are perfect for drinks with friends in GoMA's stylish bar.

- **Enjoy a "Paddle and Prawns" Experience on the Brisbane River**

Guide your own illuminated kayak up the Brisbane River on Friday and Saturday nights. Take in the shimmering lights of the cityscape on a leisurely 90-minute paddle before relaxing with a riverside meal of fresh king prawns (Friday) or a barbecue (Saturday) with famous Queensland lamingtons for dessert. Wash it all down with Australian beer and wine.

- **Shopping at Brisbane's The Collective Markets**

Browse the stalls for unique and eclectic clothing by emerging artisans. This fun and friendly market in the bustling Stanley Street Plaza is held on Friday evenings and weekends. The designers are mostly creative young people and the emphasis is on effortless cool. Listen to live music as you look over handmade jewellery, art, antiques, photographs and vintage fashions.



# Sydney and Brisbane Campuses

CHS is a registered higher education College operating from two campuses; located in Greater Sydney (Parramatta) and Brisbane. The college provides a supportive environment, fosters a culture of professionalism, and strives for academic excellence, all to ensure student success. The teaching facilities are in refurbished buildings with air conditioning, spacious classrooms and computer labs, Wi-Fi and all the necessary audio-visual equipment for effective classroom learning. The student library facilities and comfortable student relaxation area are located at both Parramatta and Brisbane campuses. There is a huge variety of different ethnic foods available nearby, and there are kitchen facilities to enable students to bring in their own food. The student lounge also includes a range of vending machines where food and drinks can be purchased.



**Sydney Campus** is located on Level 4, 1-3 Fitzwilliam Street, Parramatta. Parramatta is a prominent suburb of Sydney, on the banks of the Parramatta River. It is often regarded as the second Central Business District of Sydney. Providing extensive facilities and resources, CHS Sydney is located next to the railway station and Church street which is the home to many shops and restaurants.

- 2 minutes' walk to Parramatta railway station
- 2 minutes' walk to main Bus stop
- 2 minutes' walk to the biggest shopping complex in Sydney (Westfield Parramatta)
- 12 minutes' walk to Parramatta Park
- 30 minutes train ride to the stunning Sydney Harbour (Darling Harbour, The Rocks, Royal Botanical Garden, Opera House and Harbour Bridge)

**Brisbane Campus** is located on Level 2, 269 Wickham Street, which is in the heart of the Brisbane city and is very close to transport, parks and universities.

- 7 minutes' walk to central railway station
- 5 minutes' walk to bus interchange
- 2 minutes' walk to the Queen Street Mall, Botanical Garden, River Walk and Eagle Street Pier
- 4 minutes' walk to the Queensland University of Technology
- 7 minutes' walk to the City Hall Museum
- 10 minutes' walk to South Bank, Brisbane theatre and 10 minutes' ride to The Gabba Cricket Ground
- 15 minutes' ride to Mount Kuta
- 45 minutes by train to Gold Coast
- 40 minutes' drive to Theme Parks (Movie World, Dream World, Sea World)



## Living Cost

Knowing the average living costs in Australia is an important part of your financial preparation. Please see below some of the costs associated with living and studying in Australia. The costs below are an approximate guide only. Source: <https://costofliving.studyaustralia.gov.au/>

If you are an International Student and you intend to stay in Australia for at least 12 months, you will need to have access to funds of at least \$24,505 AUD to cover your 12-month living expenses. This amount will vary if you are bringing family members to Australia with you. For further information please check on financial requirement page on Department of Home Affairs at [immi.homeaffairs.gov.au](https://immi.homeaffairs.gov.au).

## Accommodation & Airport Pick-Up Service

CHS in partnership with 2Stay Accommodation Agency offers quality accommodation solutions in their modern, comfortable and secure accommodation in both Sydney and Brisbane areas. You can choose from homestay, shared accommodation, hostels, studios or apartments. Each is furnished and equipped with everything you need to start your adventure in Australia.

For further information please visit their website [2stay.com.au](https://2stay.com.au)

Shared accommodation is also a popular option. You can either team up with your friend or rent a room in an existing shared house. Advertisements can be found on property websites such as [domain.com.au](https://domain.com.au), [flatmates.com.au](https://flatmates.com.au), [gumtree.com.au](https://gumtree.com.au) or [realestate.com.au](https://realestate.com.au). If you are thinking of sharing with others, please ensure your new home is safe and comfortable. Please be advised that these sites are independent to CHS.

# Sydney Public Transportation



## Trains

Sydney has several train lines from the Central Railway Station that head east, north, west and south from the CBD. There are plenty of stations along each line, so check out the timetable to see if any are close to where you live. The train system is a practical choice for getting to the outer suburbs and around the CBD quickly.



## Buses

To get to many of Sydney's metropolitan areas, buses are the best option. Buses service almost all parts of Sydney and its outer suburbs, so it's pretty likely there'll be a bus stop near you. Buses around Sydney vary in arrival times, usually averaging between 5-15 minutes at popular bus stops and ranging up to an hour in the outer suburbs.



## Ferries

Ferries cover almost every suburb that's fronted by Sydney Harbour, including Manly, Balmain, Circular Quay and even extend as far as Parramatta. The ferry system is one of the prettiest ways to get around the city, taking advantage of the city's harbour, port and river system. Tickets are a little more expensive but worth it for the scenery.



## Ticketing

The reusable smart card (Opal card) is easy to use. It works a bit like a debit card: first, you'll need to load money onto your Opal card at a station or an authorised store such as 7/11. Visit [www.opal.com.au](http://www.opal.com.au) for information on where to buy and top up an Opal card.



# Brisbane Public Transportation



## Trains

Trains are the best way to commute to and from suburbs located a long distance out from the city centre. There are 11 routes (Airport, Beenleigh, Caboolture, Cleveland, Doomben, Ferny Grove, Gold Coast, Ipswich/Rosewood, Richlands, Shorncliffe and the Sunshine Coast). Most train routes run every 20 minutes to half an hour and depart hourly late at night.



## Buses

There are hundreds of bus routes around Brisbane, which can take you from the CBD to the border of NSW at Tweed Heads. If you're in the city, keep an eye out for the red stop signs around the city - they offer a free loop around the city during the day! Buses servicing the inner city are very frequent, arriving every 5-15 minutes. On Friday and Saturday nights, Nightlink buses run from the city and the Valley to surrounding suburbs from 1am to 5am.



## Ferries

The Citycat catamarans follow the snaking river downstream from the Northshore Hamilton Ferry Terminal all the way to the University of Queensland, stopping at key points along the river. In addition to the Citycats, there are the cross-river ferries and the free CityHopper, which only run to the other side of the river. Citycats depart roughly every 15 minutes, the CityHopper every 30 minutes and it's every 10-15 minutes for the cross-river ferries.



## Ticketing

Go Cards are the cheapest, most efficient way to get around Brisbane. Purchase a card from newsagents or ticket kiosks at stations and top up either in store, online or at machines at most stations. Then all you need to do is swipe on to your bus, train or ferry (look for the go card sign) and swipe off when you leave. Single tickets are also available on most journeys. There are 23 zones that expand in circles from the centre of the city, and your fare is deducted from your go card. Off-peak prices apply between 9am-3.30pm and 7pm-3am weekdays and all day on weekends and public holidays.

# Support Services



## Language And Academic Workshops

ELSYS in affiliation with the ECA College of Health Sciences runs free weekly workshops designed to help students to achieve their language and academic goals as well as increase students' chances of finding a suitable job while studying. The workshops cover the areas of Hospitality, Work Ready Skills, Academic Writing, IELTS Practice Test, Pronunciation, Coffee Conversation and One- on-one session.



## Student Learning Support

Student Learning Support at CHS aims to improve the academic experience for all students by motivating them to do the best work they can, by developing skills for succeeding with academic studies and improving job-readiness. Student Learning Support also provides support with specific learning issues such as paraphrasing, referencing and time management. Student learning support is delivered in a range of formats, in-person and online via the CHS Canvas Learning Management System (LMS), telephone, Skype and Zoom.



## Academic Workshops

Student Learning Support delivers workshops on a range of topics:

- Academic skills including: searching for information; reading academic texts; academic writing; preparing a literature review; referencing accurately; and exam preparation
- Computer and discipline-specific skills such as: MYOB; SPSS; MS Project; Excel; and data analysis.
- Professional skills including: business communication; teamwork; and time management
- Job-readiness skills such as: resume writing; job interviews
- Some workshops include industry guest speakers.



## Academic Helpdesk

The Academic Help Desk is for individual consultations with CHS Student Learning Support staff on specific study-related issues. Students may drop-in for a 15-minute session or book for an online consultation session (via phone, Skype or Zoom).





## Immersion Support

Student Learning Support provides immersion support in scheduled classes. Student Learning Support staff attend selected classes and offer support with specific learning activities alongside academic teaching staff. This support includes clarification and supplementation of lecturer's expositions, assistance with solving tutorial exercises, structuring, referencing and language in completing assignments. In addition to in-class immersion support, students may also arrange continuous after-class support where necessary.



## Academic Integrity Module

All CHS students are required to understand CHS's academic integrity standards and conduct. The Academic Integrity Module (AIM) provides students with information about their academic integrity responsibilities, the importance of proper academic acknowledgement and referencing, and how to avoid plagiarism and other academic misconduct. CHS students are expected to complete the Academic Integrity Module within the first four weeks of their study at CHS. The Module is available through Canvas Learning Management System (LMS).



## Orientation & Arrival

The CHS orientation program is designed to familiarize you with college life including getting to know more about your course, meeting fellow students and staff, learning about service and support available for you, and also to getting to know your campus and surrounding area. If you are an International Student, we will also explain your visa condition and what you can do to maintain these conditions while you are studying with us.



## Health, Safety & Emergency Support

CHS offers a free counselling service to students to support their mental health and wellbeing. The counsellor has expertise working with international students. The counselling service provides support for students who are experiencing difficulties such as stress, anxiety, relationship issues, financial problems and feeling unable to cope. The session is strictly confidential, the counsellor is there to listen and provide support which could include referral or appropriate information. CHS puts safety first to ensure their students and staff can study and work in a safe environment.



## Student Accommodation

Please refer to page 11, for accommodation details.



# Admission Requirements

## Entry Requirements

	Master Degree	Graduate Diploma	Graduate Diploma
Academic Requirements	<p>Recognised Bachelor degree (AQF 7) or an equivalent, or higher qualification in a health-related discipline;</p> <p>OR</p> <p>Successful completion of the CHS Graduate Diploma in Health Management;</p> <p>OR</p> <p>Successful completion of the CHS Graduate Certificate in Health Management.</p>	<p>Recognised Bachelor Degree (AQF 7) or an equivalent, or higher qualification in a health? related discipline*;</p> <p>OR</p> <p>Successfully completed a Graduate Certificate or a Graduate Diploma (AQF 8), in a health related discipline.</p>	<p>Recognised Bachelor degree (AQF 7), or an equivalent, or higher qualification in any discipline,</p> <p>OR</p> <p>Graduate Certificate or Graduate Diploma in any discipline (AQF 8),</p> <p>OR</p> <p>Have a minimum of three years relevant work experience in a health related field*. The relevant work experience must be demonstrated through a CV and a Statement of Service, confirming the dates of employment and the position held within the organisation.</p>

## Alternate Entry Requirements

Academic Requirements	<p>Students that do not meet the entry requirements for the Master of Health Management may use the successful completion of the CHS Graduate Certificate or CHS Graduate Diploma as a pathway into the Master of Health Management program.</p>	<p>Recognised Bachelor Degree (AQF 7) or an equivalent, or higher that is not in a health-related discipline</p> <p>OR</p> <p>Successfully completed a Graduate Certificate (AQF 8), in a health related discipline.</p>	<p>See Graduate Certificate Entry Requirements above.</p>
Work Experience	<p>Have a minimum of 3 years relevant work experience in a health related field(s).</p> <p>The relevant work experience must be demonstrated through a CV and a Statement of Service, confirming the dates of employment and the position held within the organisation.</p>	<p>Have a minimum of 2 years of full-time work or equivalent part time experience in a health related field(s).</p> <p>The relevant work experience must be demonstrated through a CV and a Statement of Service, confirming the dates of employment and the position held within the organisation.</p>	<p>See Graduate Certificate Entry Requirements above.</p>

## Special Entry Requirements

Indigenous students, students from low socio-economic backgrounds, and students with disabilities who apply to CHS will have their applications individually assessed by the Dean. Successful applicants will be provided with ongoing support to meet their specific learning needs. CHS will review Alternate and Special Entry applications to ensure that students admitted to the course have appropriate levels of experience.

	Master Degree	Graduate Diploma	Graduate Diploma
	Qualifications commensurate with the requirements of an AQF Level 7 health management course and have reasonable prospects of academic success.	Diploma Qualifications commensurate with the requirements of an AQF Level 6 course and have reasonable prospects of academic success.	Evidence of more substantial (5 years minimum) recent work experience in a health related field(s) is required.

\* List of relevant health contexts: Health administration, environmental health, allied health, health information management, medicine, dentistry, nursing, psychology, clinical, research and biomedical health, human biological sciences, forensic, food and pharmacology sciences, welfare aged care, behavioural science, sport and recreation disciplines, public health, epidemiology, medical technology (Medical Lab Technologists), biomedical engineering, biomedical sciences, human physiology, exercise physiology, occupational therapy, paramedicine, physiotherapy, speech pathology and chiropractic disciplines.

## English Language Requirements

Applicants with international qualifications not delivered in English must demonstrate English equivalency as follows (subject to verification – refer section 5 below):

- Academic IELTS: 6.5 or higher overall with a minimum writing and speaking score of 6.0; or
- IBT (Internet-based TOEFL) overall score of 79 with a writing section minimum of 21 and speaking 18; or
- Cambridge Certificate of Proficiency in English (CPE): Overall score 180, writing and speaking 180; or
- Cambridge Certificate of Advanced English (CAE): Overall 176 with a writing and speaking minimum score of 169; or
- PTE Academic Module with a minimum score of 58 with a writing and speaking section minimum of 50.
- English For Academic Purposes Level 2 (EAP 2): Upper Intermediate 'A' grade or higher with IELTS 6.5 requirement

Where there is any doubt about an applicant's ability to successfully undertake the course, the applicant will be interviewed by the Course Coordinator before a final decision on the admission of the applicant is made. The Course Coordinator may request additional evidence relating to English language proficiency (including in a work or scholarly context). During these interviews specific consideration will be given to the recruitment and admission of Aboriginal and Torres Strait Islander prospective students.

## Conditional Offers on Satisfying English Language Requirements

Applicants who do not meet CHS's English proficiency requirements can be made a conditional letter of offer with a requirement to complete an approved intensive English language course and meet the required standard prior to commencing their CHS award course. The duration of the English language course varies, typically from 4 to 20 weeks. The required duration of study is dependent on the applicant's prior achieved English language proficiency as identified in their scores in approved English language courses completed within the past 24 months (refer Table 2 below).

Course Level	IELTS Overall	IELTS Bands - S, L, R, W	EAP 1 (weeks)	EAP 2 (weeks)
AQF Level 9 Master/	6.5	none less than 6		
		less than 6		12
	6	none less than 6		12
AQF Level 8 GradDip / GradCert	5.5	none less than 6	6	12
		less than 5.5	12	12
	5	none less than 5	12	12
		less than 5	12	12
	4.5	none less than 4.5	12	12
		less than 4.5	12	12

Applications for admission to a course are made through <https://ecagroup.my.site.com/s/student-admission> or through student recruitment agents.

# Healthcare Overview

Healthcare is Australia's largest and fastest growing industry and the number of workers engaged in the health and allied sector is forecast to rise significantly over the next decade as the population ages and the demand for health care increases. According to the Australian Government HealthCare and Social Assistance is Australia's largest and fastest growing industry, employing over 2 million people and is expected to grow strongly, with a predicted number of 533,400 job openings over the next 10 years (see page 20).

Our courses are designed for students seeking to update and align their knowledge and skills in healthcare management for improved professional performance. Graduates may return to practice or seek to continue their education in other institutions.

ECA College of Health Sciences is dedicated to the academic ideals of education, research and community service. The College's mission is to:

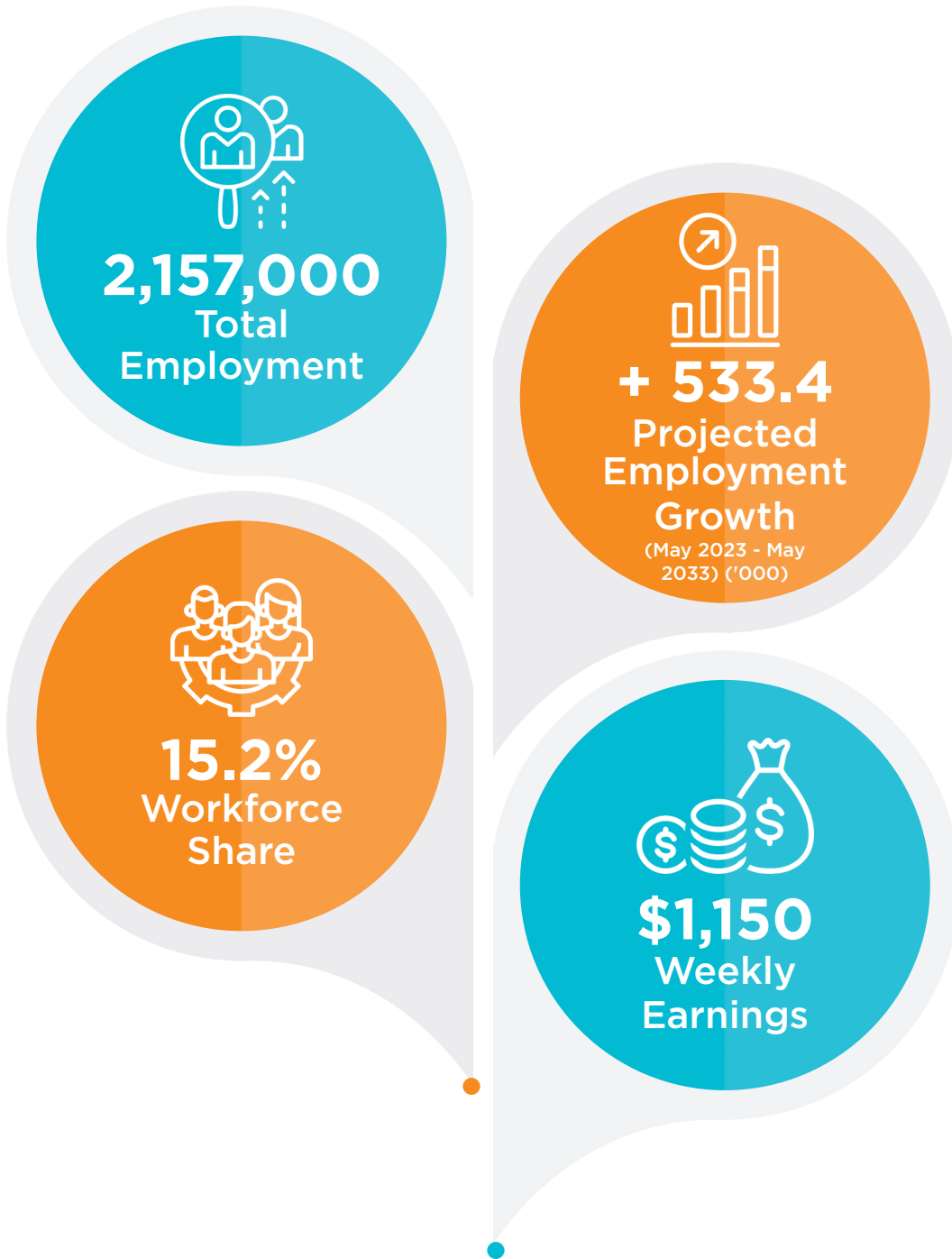
- Provide innovative and cost-effective educational opportunities for students at graduate level.
- Accelerate the acquisition and beneficial application of knowledge at both individual and community levels through research, teaching, training and community service activities;
- Contribute to the world of learning and the extension of knowledge; and
- Co-operate with other Australian and overseas institutions.



## List of Courses

- Graduate Certificate in Health Management
- Graduate Diploma in Health Management
- Master of Health Management

# Career Outlook in the Australian Healthcare



ECA COLLEGE OF  
HEALTH SCIENCES

Reference:

<https://www.jobsandskills.gov.au/data/employment-projections#nationalemployment>  
<https://www.jobsandskills.gov.au/data/labour-market-insights/industries/health-care-and-social-assistance>

# Graduate Certificate in Health Management



[Learn More](#)

## Duration



6 Months Full-Time  
or 1 Year Part-Time  
(Domestic Students Only)

## Number of Units



3

## Intakes



Sydney & Brisbane  
Feb, Jun, Sep

## Fees



International Students: \$10,500  
Domestic Students: \$7,800  
Scholarships Available

## Course Description

The Graduate Certificate in Health Management (CRICOS:106939A) is a foundation level course that aims to build core leadership and management capabilities in healthcare through development of enhanced knowledge and understanding of contemporary issues in healthcare, self, individual and team leadership and quality, safe, collaborative healthcare practice and delivery.

## Pathways

This course is nested within the Diploma in Health Management and the Master of Health Management. Successful completion of the 24 credit points required for award of the Graduate Certificate will enable entry into the Graduate Diploma in Health Management if all other stated entry criteria are met.

## Course Learning Outcomes

- Demonstrate the leadership capabilities required to effectively manage self, individuals and teams in the delivery of healthcare.
- Evaluate current healthcare challenges to improve the quality of healthcare delivery.
- Design appropriate strategies to address current quality and safety challenges in healthcare.
- Develop plans to build and improve own leadership and management capabilities to enhance collaborative practice to address current and future organisational needs.

## Career Opportunities

By completing the Graduate Certificate in Health Management graduates will gain the core knowledge, perspectives, skills and high-level cognitive abilities in key areas such as understanding the structure and complexity of the health and social care system, governance, safety and quality in healthcare, and leadership and management in healthcare.

Successful completion of the Graduate Certificate in Health Management course prepares you for entry level roles in administrative and managerial teams charged with planning and managing the delivery of health and social care services in a variety of fields, such as hospitals and community health centres, private clinics, aged care services, health planning and administration or quality assurance in government agencies, aid services and so on.

## Trimester 1

HM001	The Australian Healthcare System: Contemporary Challenges
HM002	Governance, Safety and Quality in Healthcare
HM003	Leadership and Management in Healthcare

\* For detailed entry requirements, please refer to pages 16 & 17.

# Graduate Diploma in Health Management



[Learn More](#)



## Duration



1 year Full Time or  
2 years Part-Time  
(Domestic Students Only)

## Number of Units



6

## Intakes



Sydney & Brisbane  
Feb, Jun, Sep

## Fees



International Students: \$21,000  
Domestic Students: \$15,600

## Course Description

This is an intermediate-level course (CRICOS: 106940H) that aims to expand on the knowledge and skills developed in the Graduate Certificate to enable the application of theories, evidence, models and frameworks to achieve best practice for the management and leadership challenges commonly faced in healthcare practice.

## Course Learning Outcomes

- Demonstrate the leadership capabilities required to manage healthcare delivery and services.
- Develop effective communication skills to engage teams and enhance collaboration.
- Apply critical thinking skills to devise best practice, evidence-based solutions to healthcare challenges.
- Evaluate own and others' contribution to teamwork using recognised frameworks.
- Demonstrate mindfulness of cultural, social and economic diversity and be sensitive to the needs of marginalised population groups, particularly Indigenous Australians.

## Career Opportunities

By completing the Graduate Diploma in Health Management graduates will gain the core knowledge, perspectives, skills and high level cognitive abilities in key areas such as understanding the structure and complexity of the health and social care system, governance, safety and quality in healthcare, leadership and management as well as collaborative practice in healthcare, evidence-based practice, healthcare information and technology management.

Successful completion of the Graduate Diploma in Health Management course prepares you for the delivery of health and social care services in a variety of fields, such as hospitals and community health centres, private clinics, aged care services, health planning and administration or quality assurance in government agencies, aid services and so on.

## Trimester 1

HM001	The Australian Healthcare System: Contemporary Challenges
HM002	Governance, Safety and Quality in Healthcare
HM003	Leadership and Management in Healthcare

## Trimester 2

HM004	Evidence Based Practice in Healthcare
HM005	Information Management and Technology in Healthcare
HM006	Leadership and Collaborative Practice

\* For detailed entry requirements, please refer to pages 16 & 17.

# Master of Health Management



[Learn More](#)

## Duration



**2 Years Full-Time or  
4 Years Part-Time**  
(Domestic Students Only)

## Number of Units



11

## Intakes



**Sydney & Brisbane**  
Feb, Jun, Sep

## Fees



**International Students: \$42,000**  
**Domestic Students: \$31,200**

## Course Description

This is a postgraduate course (CRICOS:106941G) that aims to expand knowledge and skills in healthcare management and leadership in the areas of people and resource management, governance, quality and safety, health economics and strategic planning, leadership of change initiatives, Health, technology and health research.

## Course Learning Outcomes

- Demonstrate critical thinking and reflective leadership that influences practice and use policy and research to foster excellence in care delivery.
- Utilise effective leadership capabilities (or behaviours and skills) to manage health services and apply change management and quality improvement processes.
- Influence others in a diverse, complex and challenging situations to achieve team and organisational goals. Evaluate own and others' contribution to teamwork using recognised frameworks.
- Demonstrate ethically, cultural and social accountability when interacting with individuals, members of multidisciplinary teams, families and community members.
- Address cultural, social and economic diversity, particularly that of Indigenous Australians, and integrate this knowledge into their management and leadership practice.
- Being able to undertake world-class research in the field of health as capstone project.

## Career Opportunities

By completing the Master of Health Management graduates will gain the core knowledge, perspectives, skills and meta cognitive abilities in key areas, such as understanding the structure and complexity of the health and social care system, governance, safety and quality in healthcare, leadership and management as well as collaborative practice in healthcare, evidence-based practice, healthcare information and technology management, healthcare change management, strategic and workforce planning in health, health finance and economics, health statistics, epidemiology and critical analysis and health management research. Successful completion of the Master of Health Management course prepares you for administrative and managerial roles related to the delivery of health and social care services in a variety of fields, such as hospitals and community health centres, private clinics and so on.

### Trimester 1

HM001	The Australian Healthcare System: Contemporary Challenges
HM002	Governance, Safety and Quality in Healthcare
HM003	Leadership and Management in Healthcare

### Trimester 3

HM007	Change and Change Management in Healthcare
HM008	Strategic and Organisational Planning for Health
HM009	Health Statistics, Epidemiology and Critical Analysis

### Trimester 2

HM004	Evidence Based Practice in Healthcare
HM005	Information Management and Technology in Healthcare
HM006	Leadership and Collaborative Practice

### Trimester 4

HM010	Health Finance and Economics
HM011	Capstone Unit

\* For detailed entry requirements, please refer to pages 16 & 17.

# Pathway and Recognition of Prior Learning



## Recognition of Prior Learning

You can apply for credit towards your CHS course if you have studied previously or you have working experience. This will reduce the duration of your study. We can assess your previous learning experience for formal or informal learning.

During the assessment CHS will focus on the comparability and equivalency of the learning outcomes, volume of learning, and program of study previously undertaken; including content and approach to learning and assessment.

## ELSIS English Pathway

ELSIS is part of the ECA Group. ELSIS College in partnership with the CHS offers a direct entry pathway to any of CHS courses. To be eligible for direct entry, you will need to achieve certain grade in English for Academic Purposes 'EAP' course at ELSIS college.

The EAP course focuses on helping students to develop the necessary skills for academic study in mainstream courses at colleges and universities in Australia.

- The EAP 1 Course is aimed at preparing students to meet the English language requirements necessary to enter VET (Vocational Education and Training) courses. On completion of the EAP 1 Course, students will need to have attained grades consistent with a minimum 5.5 IELTS score to continue their studies.
- The EAP 2 Course is aimed at preparing students to meet the English language requirements necessary to enter college or university courses. On completion of the EAP 2 Course, students will need to have attained grades consistent with a minimum 6.5 IELTS score to continue their studies.

## What Do You Learn in EAP?

- How to read and understand academic texts.
- How to operate in a university or college culture.
- How to write essays and submit reports to a standard expected by a university or college in an English-speaking country.
- How to reference texts correctly and how not to plagiarise.
- How to give a successful presentation and how to conduct a follow-up discussion.
- How to deal with high-level tasks at college or university level with confidence.





# How to Apply



## Complete the Application Form

Sign and fill-in the application form: <https://ecagroup.my.site.com/s/student-admission>



## Prepare Documents

All applicants must meet entry requirements (Academic, English, other requirements). Domestic students who have completed qualification in Australia or an English-speaking country are exempted for the English Language Proficiency requirements. Please refer to course pages on this course guide to find the specific academic and English requirements. The documents may include:

- Evidence of English language proficiency
- Certified copies of your academic transcripts and graduation certificates
- Completed Background Information Checklist and Financial Declaration
- Completed Advanced Standing Application Form (if applicable)
- Other relevant documents such as Employment letter, Statement of Purpose, etc



## Complete your Application

Sign and fill-in the application form. Email the application form and the supporting documents to [apply@chs.edu.au](mailto:apply@chs.edu.au). You may also choose to apply through one of our Agent Representative



## Accept your Offer

Successful applicants will receive a letter of acceptance that includes the name and details of the course they have applied for, and the details of the course fees. It will also have an attached document that includes all the terms and conditions of enrolment at ECA College of Health Sciences, including the refund policy. Please read carefully before you sign this document. The letter of acceptance should be signed by the student and returned to ECA College of Health Sciences with the payment receipt.



## Obtain your Student Visa

Upon receiving your signed letter of acceptance and your first payment, ECA College of Health Sciences will send you an electronic Confirmation of Enrolment (eCoE). ECoE is the main document for your student visa application.

# Document Requirements and Assessment Criteria



## Academic Documents

The following certified Academic documents are required:

- Official academic transcripts and graduation certificates from senior secondary studies and any subsequent studies, including any incomplete qualification.
- Transcripts must clearly state duration of course. If consolidated transcripts are provided, detailed mark sheets will be requested.
- Passport: A copy of the student passport photo page & visa (if applicable).

If the qualification is not in English, CHS requires an official English language translated document. We need both the original language academic transcripts, graduation certificate and translated version of the document.

---

## Translated Documents

- The translated documents must be prepared by a recognised official translation service (In Australia you can find an official translator on the NAATI website: <http://www.naati.com.au>)
- The translation must be on official letterhead and bear the stamp or signature of the translator or translation service.
- The translator must certify that the translation is a correct translation.
- The translation must not be prepared by the student, or a person interested in the outcome of the student's application.

---

## Certified Documents

- Official certified copies of documents are required. Downloaded transcripts from the internet are not accepted.
- Certified documents can be provided by an authorised person. CHS will not accept a scanned document as a certified document unless a scanned document has been sent to CHS by a CHS agent. CHS will not accept electronic stamps from agents, except from ECA authorised agents.
- Outside of Australia - Any person or agency recognised by the law of the country in which the student resides can certify documents.

---

## Evidence of Completion

Certified copy of graduation certificate.

---

## Work evidence

Copy of CV/resume including dates of employment, name of the company, title held, duties and responsibilities. Supporting evidence of employment to include:

- Reference letter from employer/s
- Copy of signed contract from past employment
- Copy of pay slips/tax invoices
- Statement of service from their employer

# Simplified Student Visa Framework (SSVF) And Genuine Temporary Entrant (GTE)

Australian government introduced a Simplified Student Visa Framework to ensure the process of applying for a student visa is more straight forward to identify for genuine students. The applicants must provide evidence that they are genuinely coming to Australia for study purposes only and they must meet the GTE requirements established by the college. The GTE requirements include personal statement addressing the GTE requirements, previous study history, current employment, ties to home country or country of residence, economic situations in home country or country of residence.

For more information about student visas, please visit the department of Home Affairs website at [immi.homeaffairs.gov.au](https://immi.homeaffairs.gov.au).

## Health Cover (OSHC)

As an International Student, it is a condition of your student visa that you must have Overseas Student Health Cover (OSHC) to cover the entire duration of your study. OSHC gives you access to out of hospital and in hospital medical services to help you to maintain your health. Allianz OSHC is our nominated/ preferred provider for OSHC, but you can purchase your preferred OSHC from the authorized provider.

## Tuition Fees

Tuition fees listed (on the each course page) are correct for 2024 only and subject to an increase for each calendar day. Additionally, all tuition fees listed on the course profiles on the CHS website. Your actual credit point session may vary depending on your course structure or chosen credit points load. The tuition fees exclude textbook fees and other amenities fees.

For detailed information about tuition fees and refunds, please refer the Refund Policy on CHS website page.

## Changes in Programs and Operations

Current and prospective students are advised that CHS may make changes to its programs and operations, including increases in the tuition fees and charges, decision to discontinue enrolments in a course, change of delivery location etc. Should there be any changes students will be given reasonable notice of changes to CHS's operations including information about increases in fees and associated costs and any consequences that may affect their choice of, or ability to participate in, an intended course(s) of study.





**ECA COLLEGE OF  
HEALTH SCIENCES**

ECA Higher Education Institute Pty Limited  
ABN 31 627 475 790 Trading as ECA College of Health Sciences  
[chs.edu.au](http://chs.edu.au)

Level 4, 1-3 Fitzwilliam Street, Parramatta,  
NSW 2150, Australia  
[info@chs.edu.au](mailto:info@chs.edu.au)  
1300 219 159

Level 2, 269 Wickham Street, Fortitude  
Valley, QLD 4006, Australia  
[info@chs.edu.au](mailto:info@chs.edu.au)  
1300 219 159

CRICOS Provider Code: 03932J  
TEQSA Provider Identification: PRV14334  
Provider Category: Institute of Higher Education

