



UNIVERSITY OF
CANBERRA

SYDNEY HILLS

UNIVERSITY OF CANBERRA SYDNEY HILLS



CRICOS 00212K | TEQSA Provider ID: PRV12003 (Australian University)

Castle Hill

1 McDougall Ln,
Castle Hill, NSW, 2154
Phone: +61 2 90528900
Email: applyuc@eca.edu.au

Version 3 10/01/2025



UNIVERSITY OF CANBERRA

SYDNEY HILLS

The University of Canberra acknowledges the Dharug people, traditional custodians of the lands where Sydney Hills Campus is situated. We wish to acknowledge and respect their continuing culture and the contribution they make to the life of Sydney and the region. We also acknowledge all other First Nations Peoples on whose lands we gather.



This session will commence soon


This session will be recorded

The audience is muted – to avoid background noise

If you have questions, please use the Q&A function

If you have difficulties with AV or general comments, please use the chat function

If you have feedback, please email rose.passarelli@eca.edu.au



UC Sydney Hills – Master Of Public Health (Extended) (HLM102) webinar

Topics

- Introducing Student Acquisition team
- UC Sydney Hills Campus presentation
- Courses Details

Host:

Rose Vianna Passarelli

Head of Student Acquisition (UCSH)

UC Sydney Hills – Master Of Public Health (Extended) (HLM102) webinar


Topics

- Course outcomes and Career Opportunities
- Research Opportunities
- Placement Opportunities



Guest Speaker:
Dr Sunil George

Discipline Lead in
Public Health
Faculty of Health



UC Sydney Hills – Master Of Public Health (Extended) (HLM102) webinar

Topics

- Course Academic Requirements
- Scholarships Available
- What are the scholarships conditions?
- Application and GS process
- What documents are required when submitting an application?

Speaker:

Charles Yang

Admissions Advisor

Future Students Office | University of
Canberra

UC Sydney Hills Contacts- ECA SA In-country team

Admissions related enquiry (all agents)	applyuc@eca.edu.au
Student recruitment and general enquiry	rose.passarelli@eca.edu.au +61 420 984815 (business WhatsApp)
Student recruitment (North India)	Minakshi.verma@eca.edu.au +91- 7227912527(business WhatsApp)
Student recruitment (Central India)	Kumar.dave@eca.edu.au +91-9924000064 (business WhatsApp)
Student recruitment (South India)	Mohammed.sait@eca.edu.au +91 7043260493 (business WhatsApp)
Student recruitment Nepal	Sapana.thapaliya@eca.edu.au +9779845541719 (business WhatsApp)
Student recruitment Bangladesh	Anna.rozario@eca.edu.au +880 1855 053613(business WhatsApp)
Student recruitment Sri Lanka	Malinda.herath@eca.edu.au + 94 776865791 (business WhatsApp)

Study in the Sydney Hills district

- Located in Sydney's northern suburbs - about 30 kilometres from the Sydney CBD - within walking distance of public transport, cafes, mall and shops.
- Is fast becoming known as an elite service hub for businesses providing professional and financial services
- Health Care and Social Assistance is The Hills Shire's second largest employment sector, supporting an estimated 8,794 jobs.



Campus tour and student's testimonials



<https://www.youtube.com/watch?v=iubbEW07w00&t=22s>



[Domestic Student Testimonial – Ron | Bachelor of Early Childhood Education | UC Sydney Hills](#)

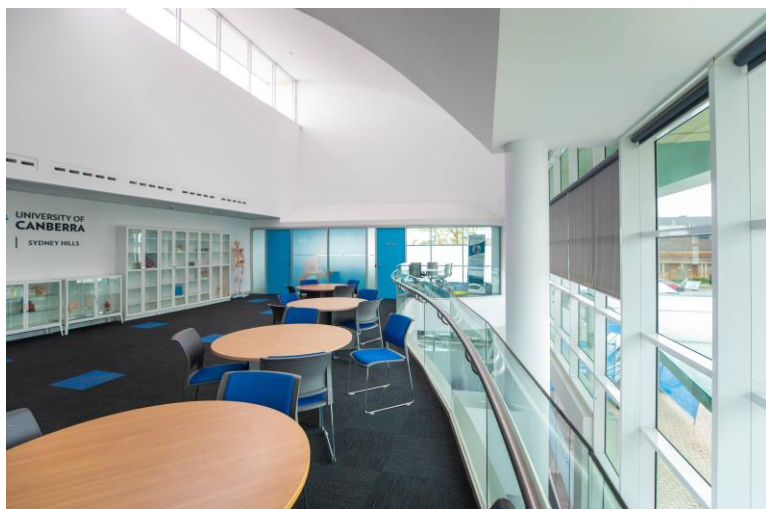
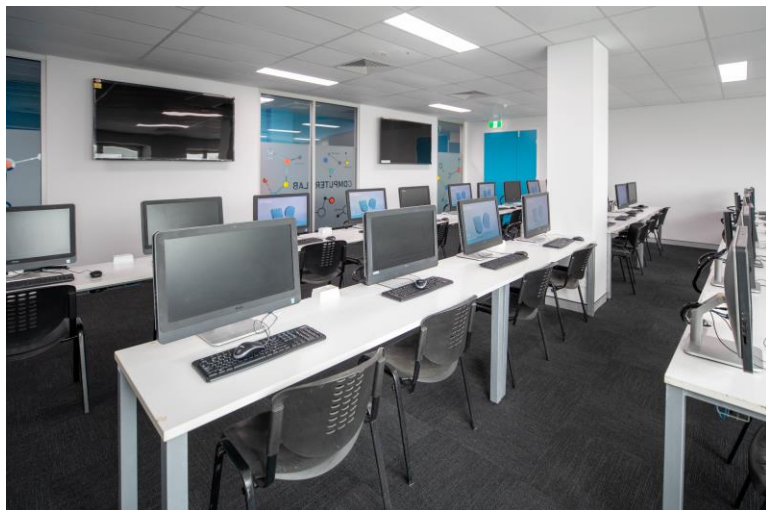


<https://www.youtube.com/watch?v=7rJMMKpslJO>



https://www.youtube.com/watch?v=NoBKc_tQR7U

Campus facilities



UC Sydney Hills - Courses offering

Bachelor of Early Childhood Education (Birth to Five) (EDB001.1) – 3 years

Career Opportunities

- Director in an early childhood setting
- Early childhood education leader
- Early childhood teacher
- Kindergarten teacher
- Policy advisor
- Curriculum development

Work-integrated learning

During this course, students will undertake a minimum of **80 days of practical placement** across a range of early childhood education settings, allowing student the opportunity to **put theory into practice to graduate job-ready, confident and industry-connected.**



5-stars for Education graduate employment and starting salaries

One of Australia's top universities
for employment in Education.
(Good Universities Guide 2024)



Distinctive benefits

Gain more access to schools than
any other Teacher Education
course and lifelong professional
development support.



Flexible study

Combine on-campus, in-school
and online learning to suit you.



Level	Institution	Name	Code	Awarded	Qualification is approved	Institution Country	
ECT	University of Canberra	Graduate Certificate in Education (Early Childhood)		Any date if enrolled prior to 1 January 2017	National	Australia	
ECT	University of Canberra	Bachelor of Education in Early Childhood Teaching (Birth-8)	448AA	Any date if enrolled prior to 1 January 2017	National	Australia	
ECT	University of Canberra	Bachelor of Early Childhood and Primary Education	326JA	Any date if enrolled prior to May 2022	National	Australia	ACECQA assessed and approved this program on 28 October 2016.
ECT	University of Canberra	Bachelor of Early Childhood and Primary Education	326JA	Any date if enrolled prior to October 2029	National	Australia	ACECQA reassessed and approved this program on 26 September 2024. University of Canberra was formerly known by a different name: Canberra College of Advanced Education.
ECT	University of Canberra	Bachelor of Early Childhood Education (Birth to Five)	EDB001	Any date prior to December 2028	National	Australia	ACECQA assessed and approved this qualification on 21 November 2023.

Professional accreditation

This course is professionally accredited with the Australian Children's Education and Care Quality Authority (ACECQA).

Pathway Credit from ACECQA-approved Diploma of Early Childhood Education and Care. Students who are credited the 8 units for the diploma will enter directly into the bachelor's second year.

<https://www.acecqa.gov.au/>



The home of health education

Why UC?



#1 in Australia for fulltime employment

In Health Services and Support
(Good Universities Guide 2024)



Industry connected

Gain access to leading hospitals, healthcare centres, and private practices in Canberra and beyond.



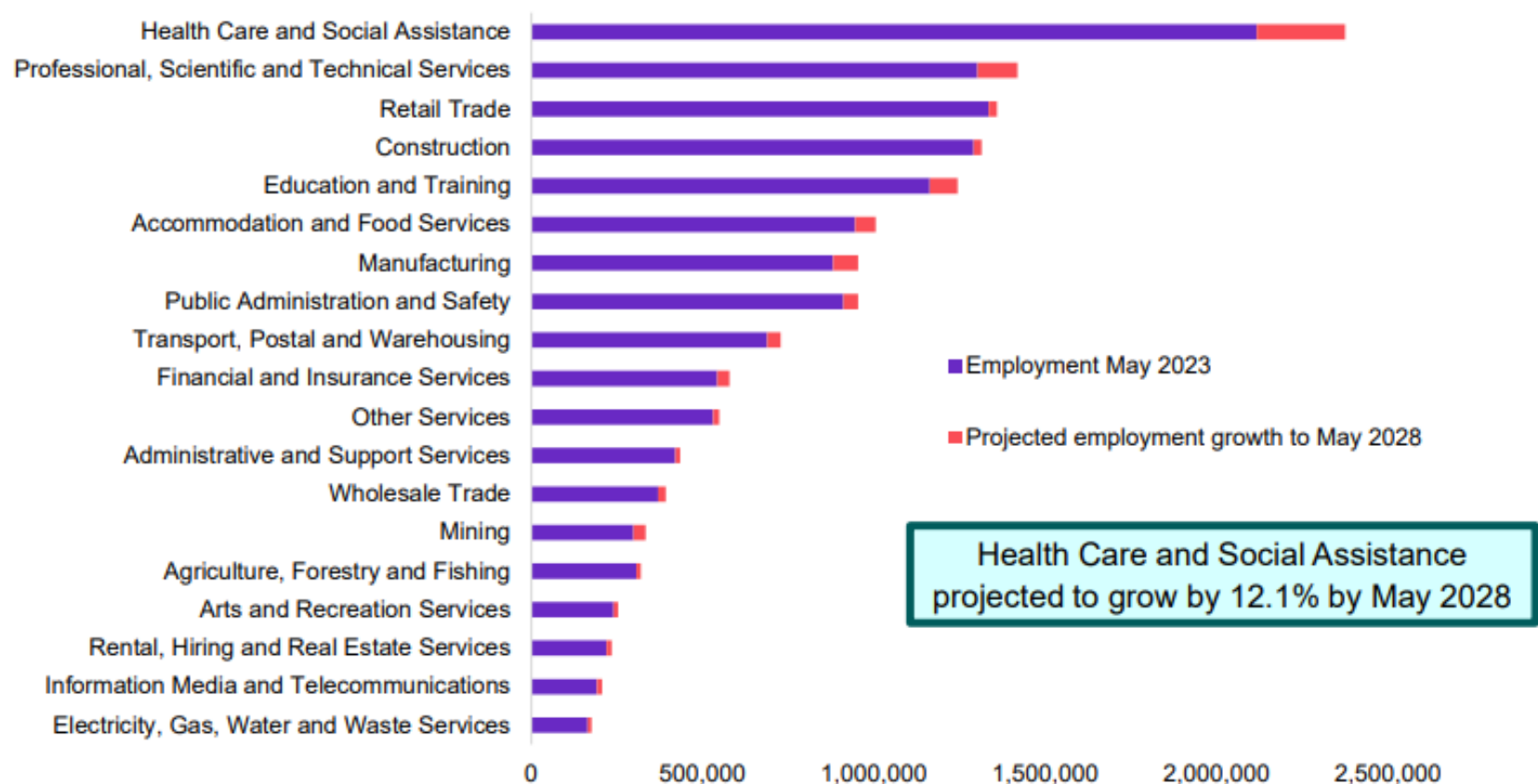
Research excellence

Explore the latest world-class research leading evolutions in healthcare.



Where are the jobs now and in the future?

Projected employment growth, five years to May 2028



The home of health education (UG & PG)

Bachelor of Nursing (364JA) (CRICOS 095076E) - 3years

- ✓ **State-of-the-art facilities**
- ✓ **Real-world experiences - 840 hours of clinical placements across healthcare settings in NSW**
- ✓ **Professional accreditation - by the Australian Nursing and Midwifery Accreditation Council (ANMAC). Graduates are eligible to apply for registration with the Australian Health Practitioner Regulation Agency (AHPRA)**

Master of Public Health (Extended) (HLM102.1)-2 years

- ✓ **Internationally recognised qualification**
- ✓ **Work Placement - in a wide variety of public health environments, including but not limited to public, private, or community settings**
- ✓ **Research Project in Health PG**



#1 in Australia for fulltime employment

In Health Services and Support (Good Universities Guide 2024)



Industry connected

Gain access to leading hospitals, healthcare centres, and private practices in Canberra and beyond.



Research excellence

Explore the latest world-class research leading evolutions in healthcare.



INTERNATIONAL SCHOLARSHIPS

University of Canberra Merit Scholarships

Awarded to commencing international students applying to a UC undergraduate and postgraduate coursework degree at University of Canberra's Australian campuses

10% off total tuition fees for the duration of your course

University of Canberra High Achievers Scholarships

Awarded to commencing international students applying to a UC undergraduate and postgraduate coursework degree at University of Canberra's Australian campuses

25% off total tuition fees for the duration of your course

University of Canberra Excellence Scholarships

Awarded to commencing international students from specific countries and institutional partners applying to a UC undergraduate and postgraduate coursework degree at University of Canberra's Australian campuses

30% off total tuition fees for the duration of your course

SCHOLARSHIP CONDITIONS:

1. Qualification will be based on academic merit.

2. All applicants are assessed for a scholarship at the time of application to the course at UC. No further application is required.

3. If awarded, all scholarships will be stated on the offer letter.

SCAN TO discover Scholarships at



Courses Value per Semester & Scholarships available

	Full Semester	10% scholarship*	25% scholarship*	30% scholarship*
Courses				
Bachelor of Early Childhood Education (Birth to Five) – 3 y Professional accreditation -ACECQA	A\$16,100	A\$14,490	A\$12,075	A\$11,270
Bachelor of Nursing – 3 y Professional accreditation -ANMAC	A\$18,050	A\$16,245	A\$13,537	A\$12,635
Master of Public Health – 2y	A\$17,950	A\$16,155	A\$13,463	A\$12,565

*Scholarship conditions apply:

Qualification will be based on academic merit;

If awarded, all scholarships will be stated on the offer letter

SSAF \$273.75

** Student Services Amenities Fee (SSAF). Click [here](#) for more information.

UC Sydney Hills – Master Of Public Health (Extended) (HLM102) webinar

Topics

- Course outcomes and Career Opportunities
- Research Opportunities
- Placement Opportunities



Guest Speaker:
Dr Sunil George

Discipline Lead in
Public Health
Faculty of Health

UC Sydney Hills – Master Of Public Health (Extended) (HLM102) webinar

Topics

- Course outcomes and Career Opportunities
- Research Opportunities
- Placement Opportunities



Guest Speaker:
Dr Sunil George

Discipline Lead in
Public Health
Faculty of Health

Master of Public Health (Extended) (HLM102.1)



Study a Master of Public Health at UC students will:

Tailored to student's interests this course is designed to analyse health information to plan and manage public health programs for populations, communities and individuals.

Course information



2.0 years



48 credit points



AUD 35,900(2025)

SSAF*

AUD 326 (2025)

Semester Fee

AUD 17,950



Castle Hills

*Student Services Amenities Fee (SSAF). Click [here](#) for more information.

Master of Public Health (Extended) (HLM102.1)

- ✓ **Internationally recognised qualification**
- ✓ **Work Placement** - in a wide variety of public health environments, including but not limited to public, private, or community settings
- ✓ **Research Project in Health PG**

Open to graduates from a wide range of fields, including clinical and non-clinical health professionals, students will dive into a broad range of topics including:

- public, ecological and global health
- epidemiology
- biostatistics
- health promotion,
- health systems, policy and advocacy
- communicable disease prevention and control
- Indigenous health
- health economics
- health and environmental sustainability
- health management including:
program management
program evaluation



Standard Full Time, Semester 1, 2026

Year 1 - Semester 1 , 2025 - FEB

Ecological Public Health PG (10054)

Epidemiology and Principles of Research PG (9594)

Health Promotion Principles PG (11924)

Introduction to Biostatistics PG (12118)

Year 1 - Semester 2 , 2025 - JULY

Evaluation of Health Programs PG (12119)

Global Health PG (10055)

Health Economics PG (10057)

Policy and Public Health PG (11925)

Winter Term

Indigenous Health: Contemporary Issues PG (11478)

Year 2 - Semester 1 , 2026 - FEB

Advanced Epidemiology PG (12121)

Communicable Disease Control PG (10053)

Research Planning PG (6486)

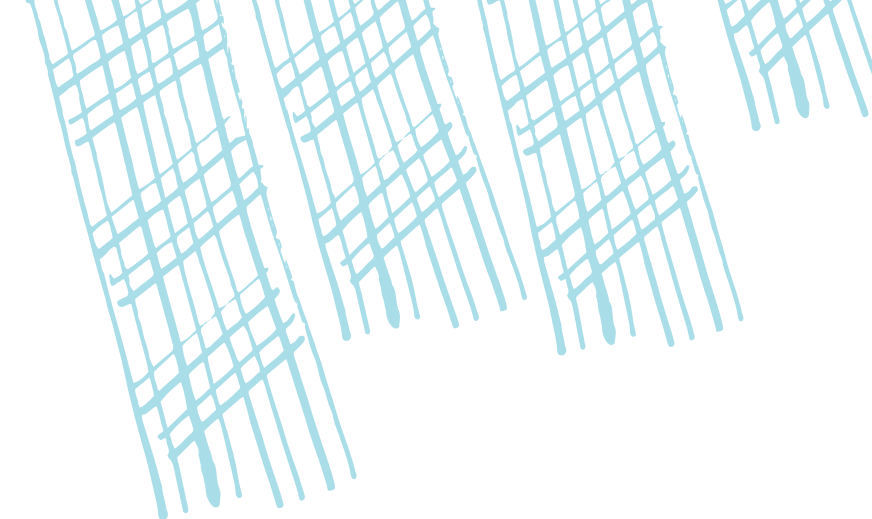
Year 2 - Semester 2 , 2026- July

Public Health Practice PG (12120)

Research Project in Health PG (6cp) (9593)

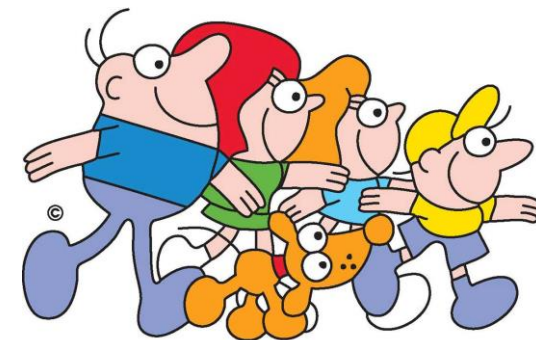
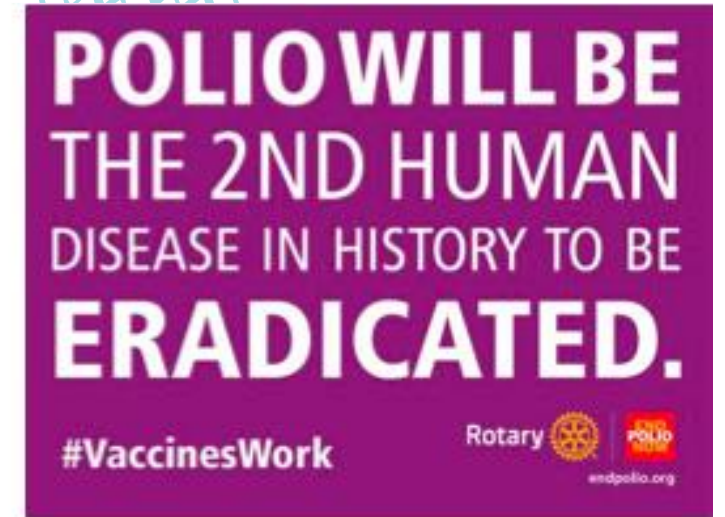
Winter Term

Healthy and Sustainable Places PG(10077)



Why Public Health ?

Address critical global and local health challenges

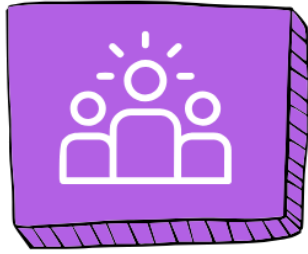


Life. Be in it.™

Why a Master of Public Health ?

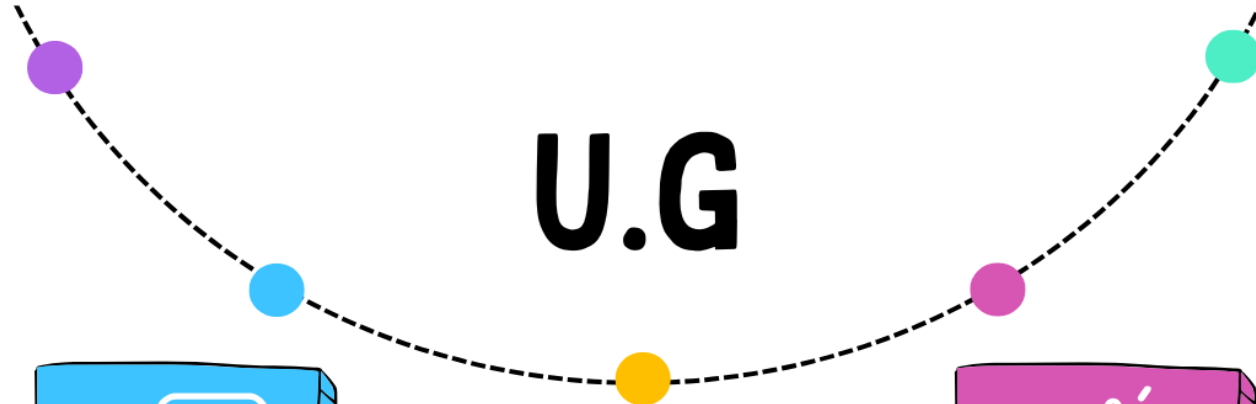


Who can do the Master of Public Health

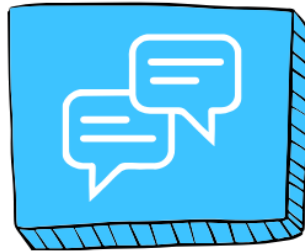


Arts

- Health Education
- Health Promotion
- Research
- Policy analysis
- Mental Health
- Wellbeing
- Community Health
- Advocacy

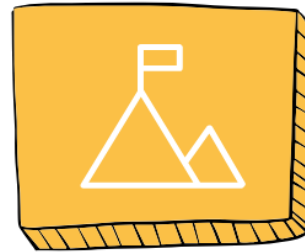


U.G



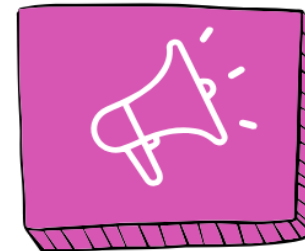
Science

- Health Education
- Health Promotion
- Research
- Policy analysis
- Big Data/
Statistician
- Epidemiology
- Advocacy



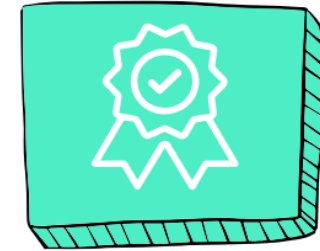
Medicine/Nursing

- Health Promotion
- Research
- Policy
- Big Data/
Statistician
- Epidemiology
- Communicable
Disease control
- Community Health



Allied Health

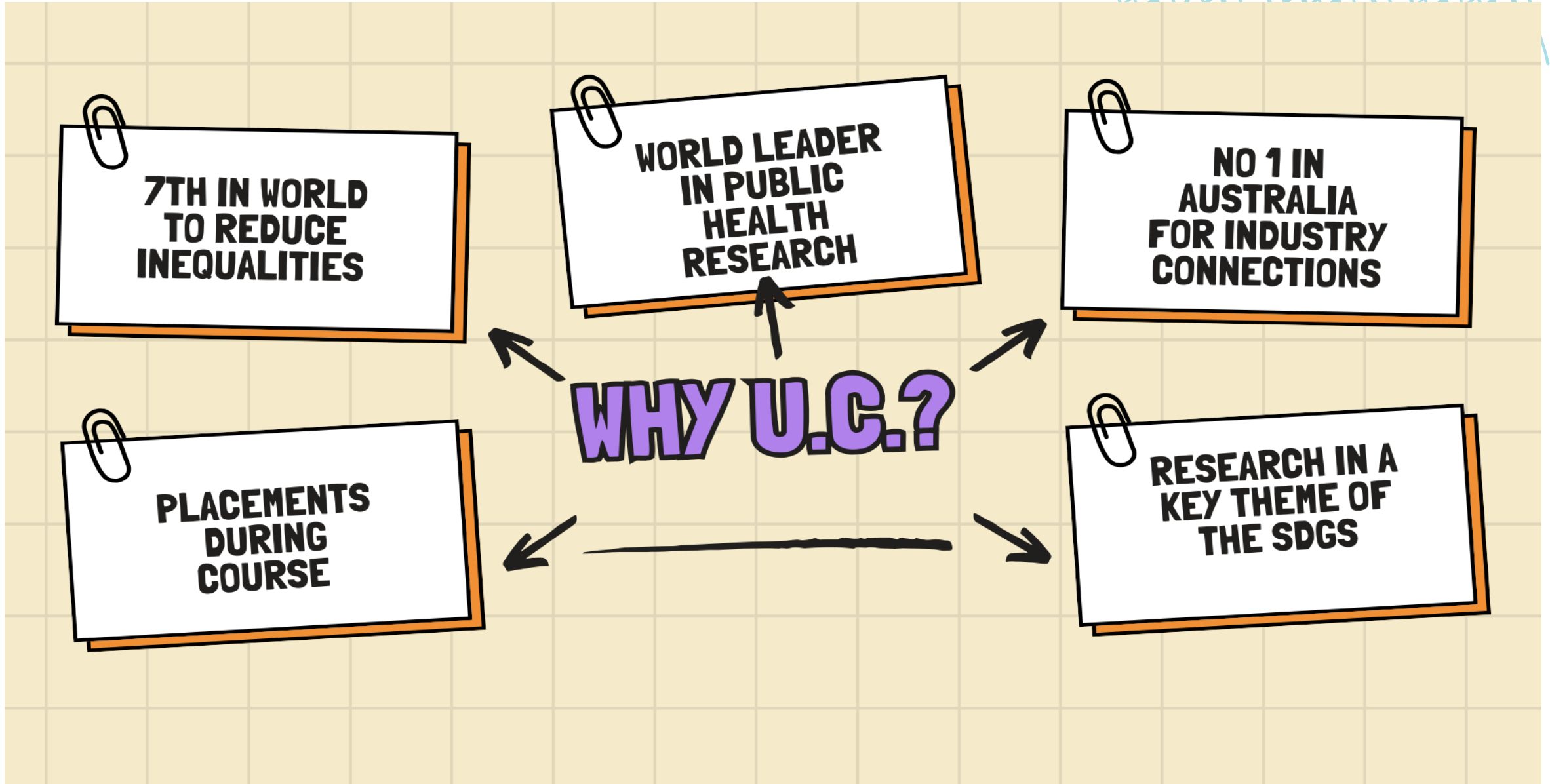
- Health Promotion
- Research
- Policy
- Epidemiology
- Health program
management
- Health services
research
- Community Health



Commerce/ Finance

- Health Economics
- Research
- Policy
- Health Financing
- Health services
research
- Big data analysis

Why come to UC?



Key features of our MPH



**Research Informed
Curriculum**



Mentoring



**Focus on skills and
application**



**Research Project
(S.D.G themed)**



**Work integrated
learning
(placements)**

1

2

3

4

5

HRI Public Health Experts



Focus on applied skills- authentic assessments



Ministerial briefing-Public Health students with Meegan Fitzharris, former Health Minister of the ACT

Focus on applied skills- authentic assessments

COMIX-CON

Examine these comics from the University of Canberra student project and answer the following questions.



Meet Jack, an average kid.

Who just wanted to fit in.

But he didn't realize the dangers.

The harsh reality

Is this really worth it?

Real friends help you make better choices.

Finding healthier alternatives.



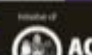
YEARS LATER...

DO YOU KNOW WHAT YOU'RE VAPING?



COMIX-CON

- What are the themes in the individual stories?
- What themes are found across all stories?
- How did the writers engage the reader?
- What is so important about the message in the story?
- Who might the audience be?
- Who might find the information delivered in the cartoon helpful?
- How did the writer persuade the reader to action their message?



Health Promotion Assessment output of our students being part of ACT Health's textbook for highschool students

Careers and salaries



Careers

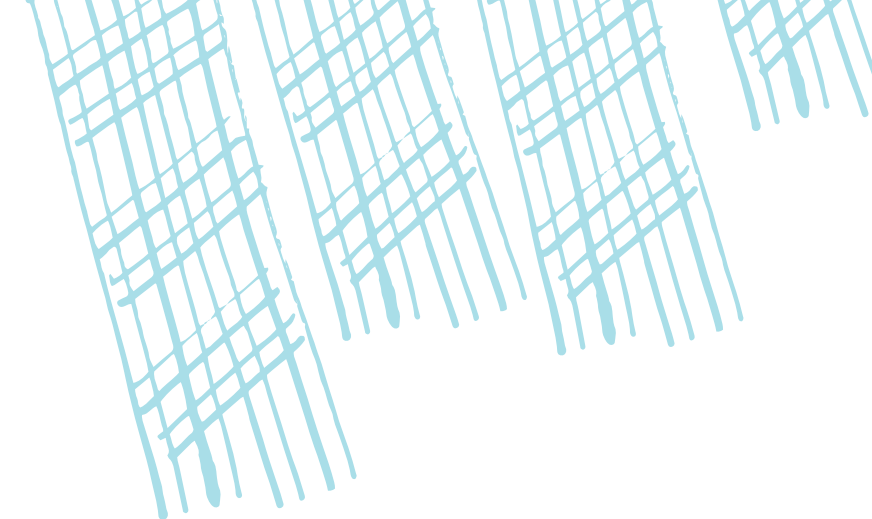
Wide range of career options – Research, Program Implementation, Program Management, Policy and advocacy.

Roles


Epidemiologist, Biostatistician, Health Promotion officer, Healthcare services manager etc.

Salaries

MPH graduates get starting annual salaries from **75,000- 110,000** (depending on the organisation, prior experience etc.)



Make an impact on the world around you



UC Sydney Hills – Master Of Public Health (Extended) (HLM102) webinar

Topics

- Course Academic Requirements
- Scholarships Available
- What are the scholarships conditions?
- Application and GS process
- What documents are required when submitting an application?

Speaker:

Charles Yang

Admissions Advisor

Future Students Office | University of
Canberra



INTERNATIONAL SCHOLARSHIPS

University of Canberra Merit Scholarships

Awarded to commencing international students applying to a UC undergraduate and postgraduate coursework degree at University of Canberra's Australian campuses

10% off total tuition fees for the duration of your course

University of Canberra High Achievers Scholarships

Awarded to commencing international students applying to a UC undergraduate and postgraduate coursework degree at University of Canberra's Australian campuses

25% off total tuition fees for the duration of your course

University of Canberra Excellence Scholarships

Awarded to commencing international students from specific countries and institutional partners applying to a UC undergraduate and postgraduate coursework degree at University of Canberra's Australian campuses

30% off total tuition fees for the duration of your course

SCHOLARSHIP CONDITIONS:

1. Qualification will be based on academic merit.

2. All applicants are assessed for a scholarship at the time of application to the course at UC. No further application is required.

3. If awarded, all scholarships will be stated on the offer letter.

SCAN TO discover Scholarships at



Eligibility by Applicant's citizenship

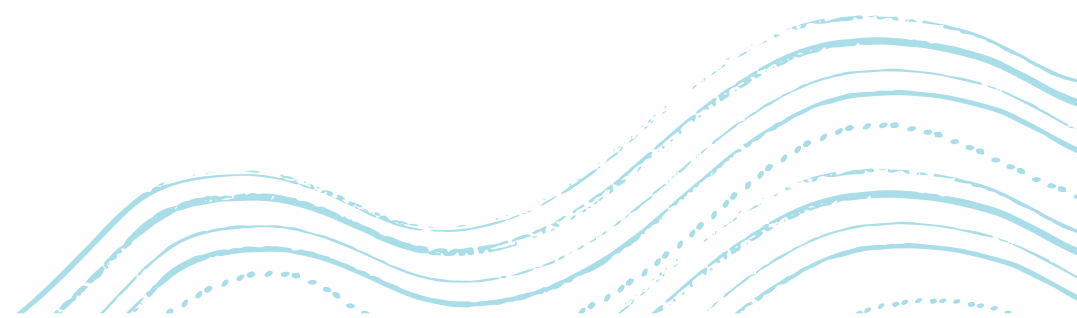
Scholarship	Eligible countries*
UC Merit Scholarship 10% off tuition fee	All applicants
UC High Achievers Scholarship 25% off tuition fee	India, Nepal, Pakistan, Bhutan, and all other countries not eligible for the Excellence Scholarship.
UC Excellence Scholarship 30% off tuition fee*	Latam: Brazil, Chile, Colombia, Peru, etc. Central Asia: Kazakhstan, Turkey, Turkmenistan, etc. North Asia: China(Inc HK and Macao), Japan, South Korea, etc. Southeast Asia: Indonesia, Malaysia, Philippines, Vietnam, etc. South Asia: Bangladesh and Sri Lanka Africa: Kenya, Ghana, South Africa Oceania: Fiji, Palau, Vanuatu, Tonga, PNG, etc.

Full country list for Excellence Scholarship please refer to: <https://www.canberra.edu.au/scholarships/>



Assessable academic qualifications for scholarship

For UG program	For PG program
Complete secondary qualifications that are equivalent to Australian Year 12.	Undergraduate degree that is equivalent to AQF 7 Bachelor qualification
Complete post-secondary qualifications that are equivalent to Australia Certificate IV, Diploma and Advanced Diploma	
Note: in the case where student complete multiple qualifications that are assessable for scholarship, the scholarship eligibility will only be based on the most recently completed qualification	



Academic requirement-UG programs

Bachelor of Nursing and Bachelor of Early Childhood Education

Type of qualification	Entry requirement	10% scholarship	25% or 30% scholarship
Australian Year 12 ATAR	Education 60 Nursing 65	70	80
Certificate IV	GPA 4.0, or ungraded pass	GPA 4.75	GPA 6.0
Diploma	GPA 3.75	GPA 4.0 or ungraded pass	GPA 5.5
Advanced Diploma	GPA 3.75	GPA 4.0 or ungraded pass	GPA 5.25

- The GPAs in this presentation are based on a 7-point scale, where 4 is pass, unless otherwise stated
- International qualifications will be converted to AQF equivalency before calculating ranking or GPA

Academic requirement-PG programs

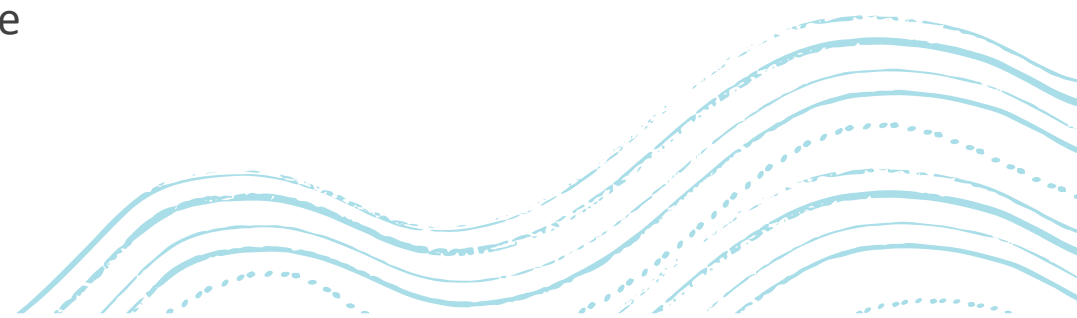
Master of Public Health (Extended)

Qualification	Entry requirement	10% scholarship	25% or 30% scholarship
Australian or overseas qualification equivalent to AQF level 7 bachelor's degree	GPA 4.0/7.0 or 50%	GPA 5.0/7.0, or 65%	GPA 5.5/7.0, or 75%

The GPAs in this presentation are based on a 7-point scale, where 4 is pass, unless otherwise stated

The percentages in this presentation are on standard Australian grading scale where 50% is pass, unless otherwise stated.

Score or GPA from other grading scales need to be converted to the above scales before assessment



Admissions Requirement – English

Test types	Bachelor of Nursing*	Bachelor of Education	Master of Public Health
IELTS	7, no band less than 7	6.5, no band less than 6	7, no band less than 6.5
PTE-Academic	65, no band less than 65	58, no band less than 50	65, no band less than 58
TOFEL iBT	94, minimum scores of 24 in Listening, 24 in Reading, 27 in Writing and 23 in Speaking	79, minimum scores of 12 in Listening, 13 in Reading, 21 in Writing and 18 in Speaking	94, minimum scores of 20 in Listening, 19 in Reading, 24 in Writing and 20 in Speaking
OET	B, no subtest less than B	C, no subtest less than C	B, no subtest less than B
Cambridge	N/A	176, no sub-score less than 169	85, no sub-score less than 176
Onshore Study	N/A	Completed Dip, Adv. Dip, or 1-year full-time tertiary study	Completed Dip, Adv. Dip, or 1-year full-time tertiary study

*Combining two test sittings to meet nursing English requirement is subject to special approval.

Who needs GS assessment

Applicant location	Country/Region Risk Level	Assessment required
Onshore	Applicant from all countries except in below situation.	GS questionnaire Financial assessment
	Current 500 visa primary holder, applying for a course that is in the same field and higher-level of previous course.	No GS assessment required
Offshore	High risk countries/regions: India, Nepal, Bangladesh, Pakistan, Kenya, Nigeria etc.	GS questionnaire Financial assessment Phone interview
	Medium risk countries/regions : Sri Lanka, Philippines, Vietnam etc.	GS questionnaire Financial assessment Can be waived for good profiles
	Low risk countries/regions: Brazil, Colombia, Fiji, Hong Kong, Thailand	No GS assessment required

This is a general guide only. Because of the complexity of personal circumstances, required documents/action for a student may be different in GS assessment.

Genuine Student (GS) Online Survey and Test Form



ONLINE GS ASSESSMENT

Hi !

Thank you for your recent application to study Bachelor of Nursing at the University of Canberra.

In accordance with University Guidelines, we are required to undertake a Genuine Student (GS) assessment of your application. This requires you to complete an online GS Form which can be accessed via the following link:

Link: <https://student-canberra.studylink.com/customform.cfm>
Security code:

The attached **Genuine Student Test questionnaire** must be completed and uploaded in your GS survey in the Statement of Purpose section.

Please complete the GS Form via the above link within 10 working days. If you require more time to complete the GS assessment, please let us know by return email.

Why do I need to complete this form?

The University of Canberra undertakes assessments of all prospective student applications in accordance with the Australian Government Department of Home Affairs' (DHA) Genuine Student (GS) requirements. A student's Confirmation of Enrolment (CoE) will not be issued until they have cleared the University's GS assessment.

More information on GS requirements can be found at:

- Department of Home Affairs website.
- University of Canberra website - GS Information.

If you require any further assistance, please contact us by replying to this email.

Admissions Office
University of Canberra

WELCOME

Applicant Name

Program Applied For

Bachelor of Nursing

The above named applicant has applied to University of Canberra. Additional information is required for this application.

Proceed

Thank you for using the University of Canberra on-line portal.

SUPPLEMENTARY FORM - GENUINE STUDENT ASSESSMENT FORM

Intake Semester 1 - Commencing 3 February 2025 Campus: UC - Sydney Hills Campus

STUDENT DETAILS

Given Name(s): *

Family Name: *

Have you been known by another name? * Yes No

Date of Birth: *

Gender: * Female Male

Email Address: * abishamagar03@gmail.com

Citizenship: *

Passport Number: *

Provide evidence of passport: * File Attachment (JPG, JPEG, PNG, PDF (unprotected) files up to 5MB in size) > Get help

Upload Now

Drag and drop or click here to browse the file that you wish to attach to your application

Do you have citizenship in more than one country? * Yes No

Have you had a visa refusal or visa cancellation or been removed from any country including Australia? * Yes No

Genuine Student (GS) Online Survey and Test Form

Genuine Student Test

Full Name	
Student ID	
Course Name	

Please answer the below questions, 150 words maximum per each question. Please avoid handwriting on the fillable PDF and instead complete it electronically. This document is to be filled by the student.

Provide details of your current circumstances, including ties to family, community, employment, and economic circumstances.

Explain the reasons you wish to study your chosen course at the University of Canberra (UC)?

What is your understanding of the requirements of your chosen course at UC and studying and living in Australia?



DISTINCTIVE BY DESIGN

Explain how completing your chosen UC course will be of benefit to you?

Give details of any other relevant information the applicant would like to include.

Provide a detailed history of your study record in Australia from the date of first arrival. (If applicable)

GS assessment-Financial

Who can be the sponsors?

1. Parents/Parents In laws
2. Spouse/Self
3. Siblings (does not include cousins)
4. Maternal and paternal grant parents
5. Maternal and Paternal aunt/uncle

You need to provide proof of relationship and sponsor letter

***Parents should always sponsor major source of the funds**

What is required

1. Sufficient fund

Expense Types	Amount needed	Note
Tuition fee (1 year)	Education: 31000 AUD Health: 34700 AUD	If scholarship is granted, calculate with reduced tuition fee
Travel	2000 AUD for most offshore applicant	May very depending on current location
Living Cost	29710 AUD	May increase with CPI
Total Required	62710 AUD-66410 AUD	Based on June 2024 data

2. Sufficient on-going income

Your sponsor will need to have an annual income of at least A\$87856 in the 12 months immediately before you apply

*Amounts indicated are for applicant in 2024, data from DHA website:

[Subclass 500 Student visa \(homeaffairs.gov.au\)](http://homeaffairs.gov.au)

GS assessment-Financial

Accepted documents as income proof

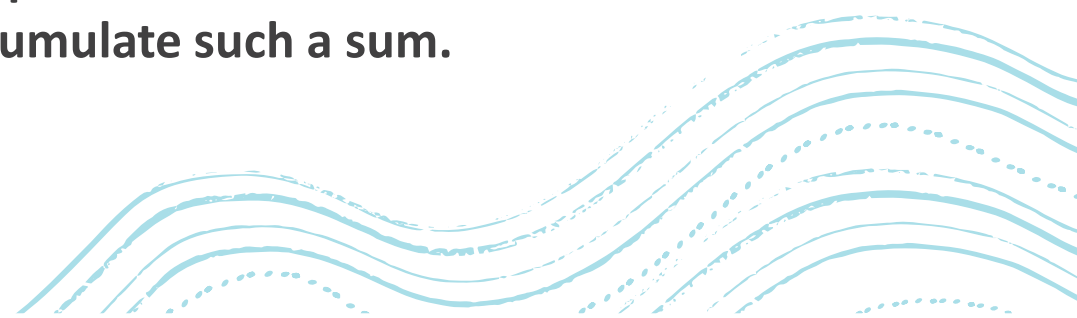
	Accepted document as proof :	Is it Mandatory?
Income from salary	3 years income Tax Returns.	Yes (India only)
	From 16 (last 3 years)	Yes. If Tax Returns is not available for India.
	Bank statements from last 3 months/ letter from employer.	Yes, Countries Apart from India.
Income from Business	Business Registration certificate.	Yes.
	Bank statements from last 3 months.	Yes.
	Tax Return / Tax Computation for last 2 years.	Yes (India only).
Income from Rent	Proof of ownership of property.	Yes.
	Lease agreement.	Yes.
	Tax Returns- previous 2 years.	Yes. (India only)
Income from Pension	Pension order.	Yes.
	Bank Statements indicating the Credit of Pension- last 3 months.	Yes.
Income from Agriculture	Proof of Ownership of the land / lease agreement.	Yes.
	Income certificate from Tehsildar.	Yes. (India only)
	Tax Returns – previous 2 years	Yes. (India only)

GS assessment-Financial

Accepted documents as proof of available funds

Type of fund	Accepted document as proof :
Saving Account	Bank Statement for the last 3 months
	For recent large deposit, source of funds is required
Fixed Term Deposit	Copies of fixed term deposit
	Letter from financial institute confirming the deposit
Education Loan	Sanction letter with collateral details
	Valuation report of property as collateral for the above loan

Note: proof of income is still required even students have provided evidence of sufficient fund. This is to justify how students and their sponsor accumulate such a sum.



Documents required to assess an application

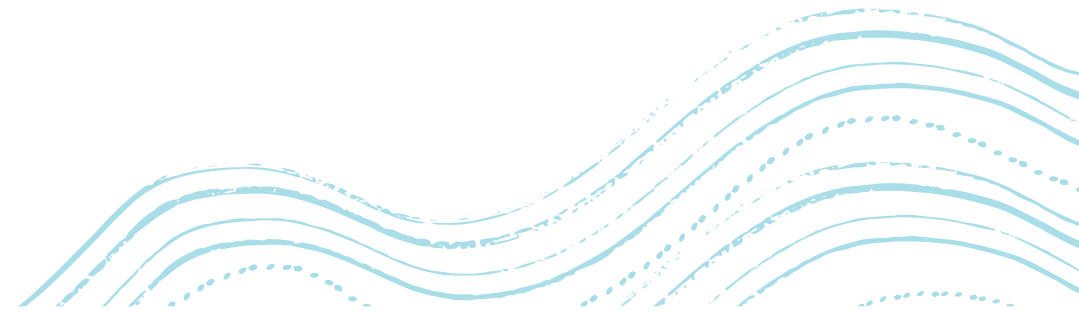
	Offshore Applications	Onshore Applications
Compulsory when submitting the application	Highest offshore academic qualification	Highest offshore academic qualification
	Spouse and dependent child information if any	Spouse and dependent child information if any
	Justification of gap activity if any	Justification of gap activity if any
		Passport and visas
		All onshore CoEs and transcripts/award certificates for student visa primary holders
Can be provided at a later stage	English test result	English test result
	Passport	



UNIVERSITY OF
CANBERRA

| SYDNEY HILLS

Semester 2, 2025
applications closed





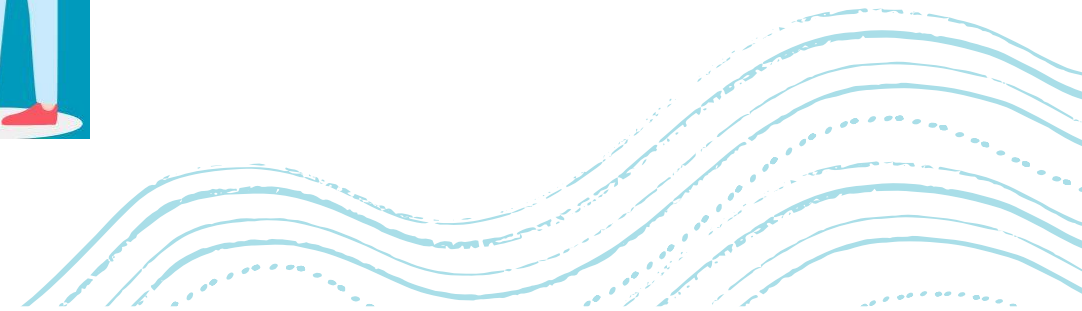
UNIVERSITY OF
CANBERRA

SYDNEY HILLS

APPLICATIONS OPEN SEMESTER 1, 2026



Bachelor of Nursing
Bachelor of Early Childhood Education
Master of Public Health (Extended)



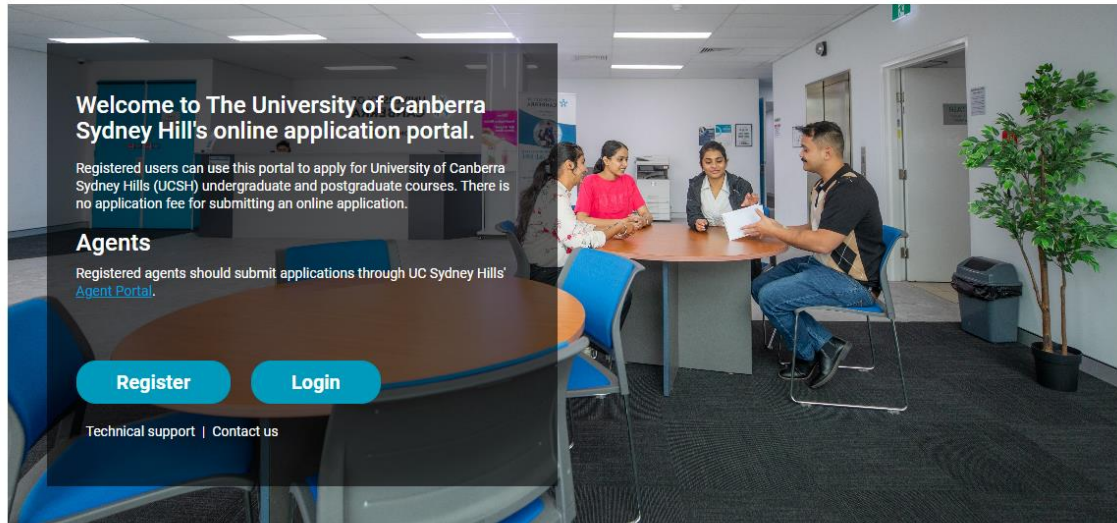
How to apply?



UNIVERSITY OF
CANBERRA

SYDNEY HILLS

Register or Log in



You can apply for UCSH

StudyLink portal <https://partner.studylink.com/partner/login/?next=/>

If you've already set up your StudyLink user account, please continue using your current login to access the portal.

<http://partner.studylink.com>

. If you don't have access, have forgotten your login details, or have any technical issues or problems please email

support@studylink.com

for assistance.

If you haven't used StudyLink previously,

- Go to <https://partner.studylink.com/>
- Enter username <xxxxxxx>
- Click 'I forgot my password'
- Enter <email address> and go back to your inbox for an activation link
- Follow the instructions to set up your account (It's important you choose a new username and password and enter a unique email address when you set up your user account)
- Finally, select "default branch" and you're ready to go!

You'll find the Agent Portal User Guide and Quick Reference Guide [here](#). If you'd like to enquire about one-on-one training, please contact support@studylink.com for assistance



How to apply?

Stage 1 : Complete the application form

- You can lodge student's application to Study Link [Apply Online](#)

Stage 2: Provide certified documents

- Attach certified copies of all academic transcripts and award certificates, passport and evidence of English score.
- All the copies of CoEs

Stage 3: Submit your application

- Submit your completed application through the platform or if you need support email to applyuc@eca.edu.au



Log in to StudyLink Connect's Partner Portal

Username *

Password *

[Forgot your password?](#)

Remember me

[Log In](#)

OR

Not a StudyLink Connect Recruitment Partner?

[Sign Up](#)

Follow us on social



Need help? [Contact us](#)



Thank you !!