



UNIVERSITY OF
CANBERRA

SYDNEY HILLS

UNIVERSITY OF CANBERRA SYDNEY HILLS



CRICOS 00212K | TEQSA Provider ID: PRV12003 (Australian University)

Castle Hill

72-74 Cecil Avenue,
Castle Hill, NSW, 2154
Phone: +61 2 90528900
Email: applyuc@eca.edu.au

Version 3 10/01/2025



UNIVERSITY OF CANBERRA

SYDNEY HILLS

The University of Canberra acknowledges the Dharug people, traditional custodians of the lands where Sydney Hills Campus is situated. We wish to acknowledge and respect their continuing culture and the contribution they make to the life of Sydney and the region. We also acknowledge all other First Nations Peoples on whose lands we gather.



This session will commence soon

This session will be recorded

The audience is muted – to avoid background noise

If you have questions, please use the Q&A function

If you have difficulties with AV or general comments, please use the chat function

If you have feedback, please email rose.passarelli@eca.edu.au

UC Sydney Hills – 2025 Admissions

webinar SA market

Topics

- Introducing Student Acquisition team
- UC Sydney Hills Campus presentation
- Courses Details 2025

Host:

Rose Vianna Passarelli

Head of Student Acquisition (UCSH)

UC Sydney Hills – 2025 Admissions

webinar SA market

Topics

- How to promote UCSH?
- Social Media & Marketing Guidelines

Guest Speaker:

Thais Stoduto

Marketing Manager - University
Partnerships- UCSH

UC Sydney Hills – 2025 Admissions

webinar SA market

Topics

- Course Academic Requirements
- Application and GS process
- GS Interview
- How to apply – Study link System

Speaker:

Charles Yang

Admissions Advisor

Future Students Office | University of
Canberra

UC Sydney Hills Contacts- ECA In-country team (South Asia)

Admissions related enquiry (all agents)	applyuc@eca.edu.au
Student recruitment and general enquiry (India, Bangladesh, Pakistan, Sri Lanka, Bhutan)	rose.passarelli@eca.edu.au +61 420 984815 (business WhatsApp)
Student recruitment (Pakistan)	Usman.Shahid@eca.edu.au >
Student recruitment (Sri Lanka)	malinda.herath@eca.edu.au +94 77 6865791 (business WhatsApp)
Student recruitment (Bangladesh)	anna.rozario@eca.edu.au +880 1855053613(business WhatsApp)
Student recruitment (India)	minakshi.verma@ecaglobal.com.au Mobile: +91- 7227912527/7486805060 (business WhatsApp)
Student recruitment (Nepal)	sapana.thapaliya@eca.edu.au + 997 984 5541719 (business WhatsApp)

Why come to UC?

7TH IN WORLD
TO REDUCE
INEQUALITIES

WORLD LEADER
IN PUBLIC
HEALTH
RESEARCH

NO 1 IN
AUSTRALIA
FOR INDUSTRY
CONNECTIONS

PLACEMENTS
DURING
COURSE

WHY U.C.?

RESEARCH IN A
KEY THEME OF
THE SDGS

Study in the Sydney Hills district

- Located in Sydney's northern suburbs - about 30 kilometres from the Sydney CBD - within walking distance of public transport, cafes, mal and shops.
- Is fast becoming known as an elite service hub for businesses providing professional and financial services
- Health Care and Social Assistance is The Hills Shire's second largest employment sector, supporting an estimated 8,794 jobs.





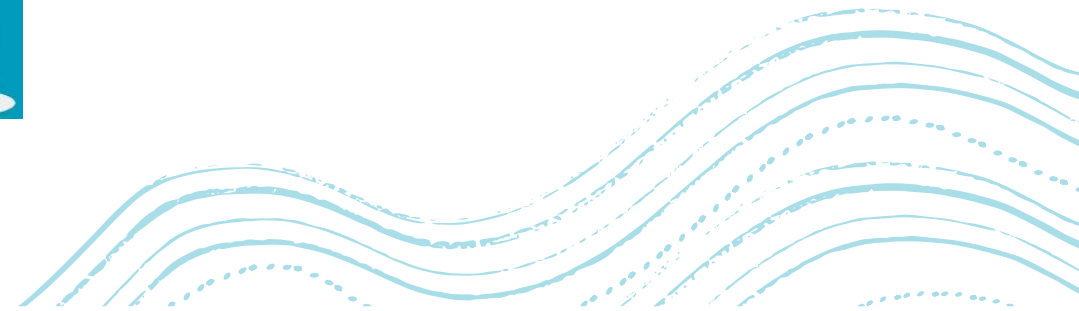
UNIVERSITY OF
CANBERRA

| SYDNEY HILLS

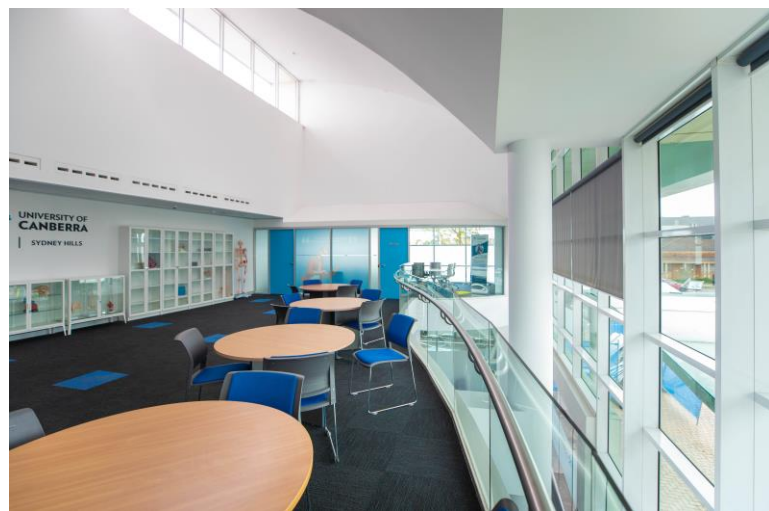
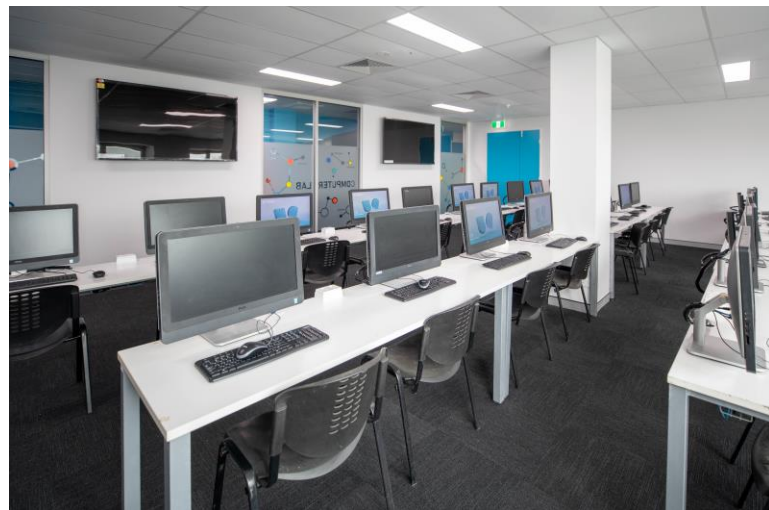
APPLICATIONS OPEN SEMESTER 1, 2026



Bachelor of Nursing
Bachelor of Early Childhood Education
Master of Public Health (Extended)



State-of-art facilities



Campus tour and student's testimonials



<https://www.youtube.com/watch?v=iubbEW07w00&t=22s>



[Domestic Student Testimonial – Ron | Bachelor of Early Childhood Education | UC Sydney Hills](#)



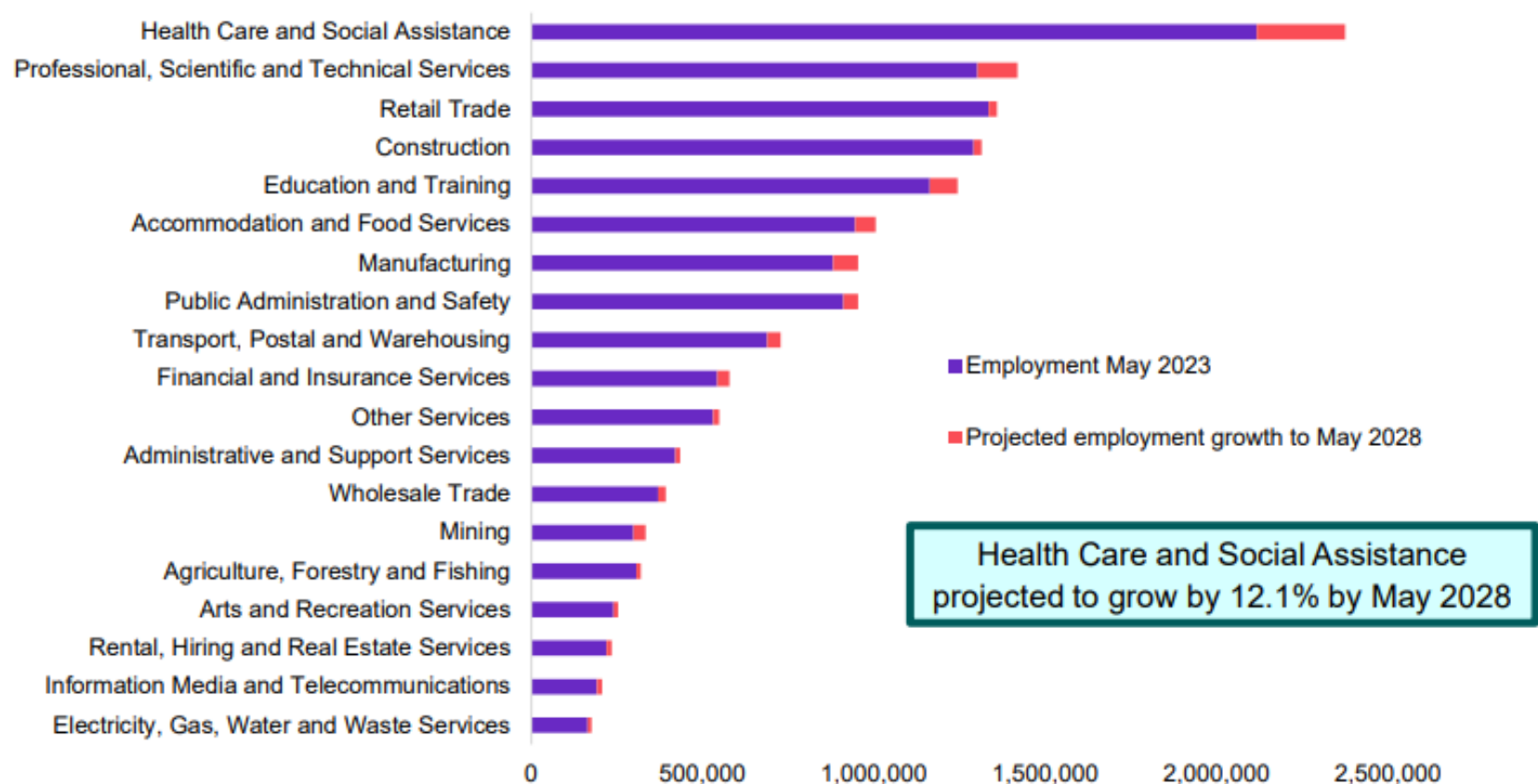
<https://www.youtube.com/watch?v=7rJMMKpslJO>



https://www.youtube.com/watch?v=NoBKc_tQR7U

Where are the jobs now and in the future?

Projected employment growth, five years to May 2028



The home of health education



#1 in Australia for fulltime employment

In Health Services and Support
(Good Universities Guide 2024)



Industry connected

Gain access to leading hospitals,
healthcare centres, and private
practices in Canberra and beyond.



Research excellence

Explore the latest world-class
research leading evolutions in
healthcare.



The home of health education (UG & PG)

Bachelor of Nursing (364JA) (CRICOS 095076E) - 3years

- ✓ **State-of-the-art facilities**
- ✓ **Real-world experiences - 840 hours of clinical placements across healthcare settings in NSW**
- ✓ **Professional accreditation - by the Australian Nursing and Midwifery Accreditation Council (ANMAC). Graduates are eligible to apply for registration with the Australian Health Practitioner Regulation Agency (AHPRA)**

Master of Public Health (Extended) (HLM102.1)-2 years

- ✓ **Internationally recognised qualification**
- ✓ **Work Placement - in a wide variety of public health environments, including but not limited to public, private, or community settings**
- ✓ **Research Project in Health PG**

2025 intakes:

SEM 1 - 16 FEB 2026

SEM 2 - 10 AUG 2026



#1 in Australia for fulltime employment

In Health Services and Support (Good Universities Guide 2024)



Industry connected

Gain access to leading hospitals, healthcare centres, and private practices in Canberra and beyond.



Research excellence

Explore the latest world-class research leading evolutions in healthcare.



Master of Public Health (Extended) (HLM102.1)

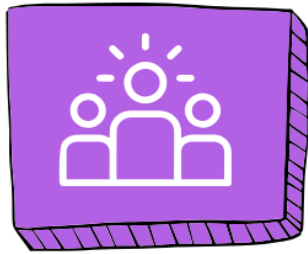
- ✓ **Internationally recognised qualification**
- ✓ **Work Placement** - in a wide variety of public health environments, including but not limited to public, private, or community settings
- ✓ **Research Project in Health PG**

Open to graduates from a wide range of fields, including clinical and non-clinical health professionals, students will dive into a broad range of topics including:

- public, ecological and global health
- epidemiology
- biostatistics
- health promotion,
- health systems, policy and advocacy
- communicable disease prevention and control
- Indigenous health
- health economics
- health and environmental sustainability
- health management including:
program management
program evaluation

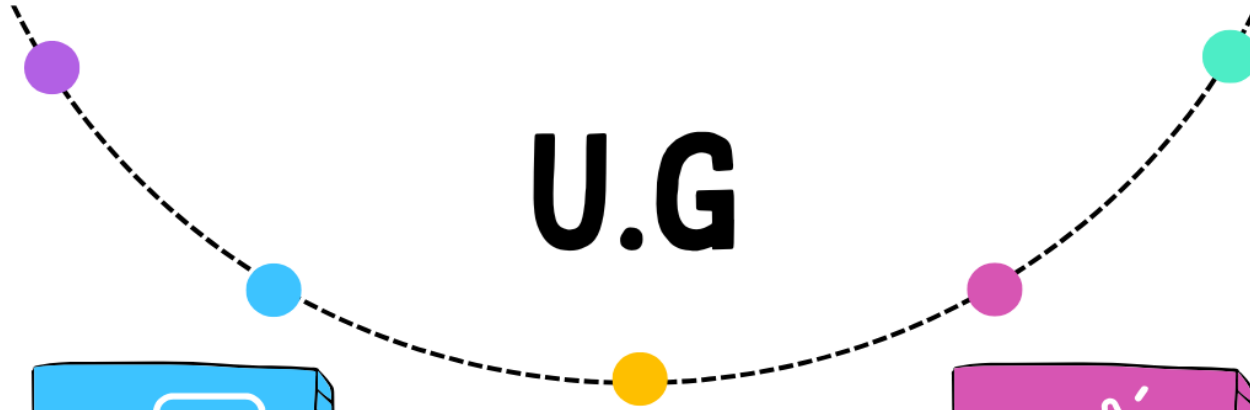


Who can do the Master of Public Health

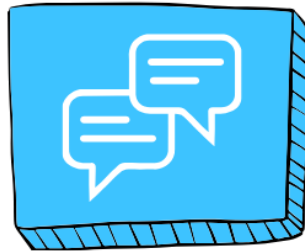


Arts

- Health Education
- Health Promotion
- Research
- Policy analysis
- Mental Health
- Wellbeing
- Community Health
- Advocacy

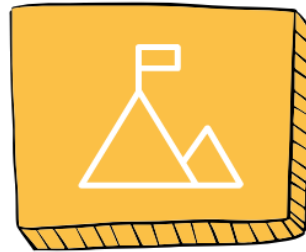


U.G



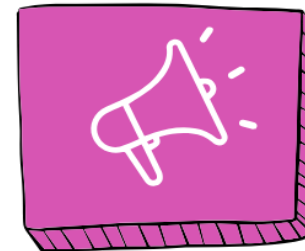
Science

- Health Education
- Health Promotion
- Research
- Policy analysis
- Big Data/
Statistician
- Epidemiology
- Advocacy



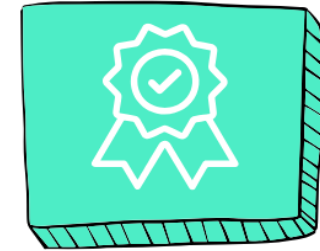
Medicine/Nursing

- Health Promotion
- Research
- Policy
- Big Data/
Statistician
- Epidemiology
- Communicable
Disease control
- Community Health



Allied Health

- Health Promotion
- Research
- Policy
- Epidemiology
- Health program
management
- Health services
research
- Community Health



Commerce/ Finance

- Health Economics
- Research
- Policy
- Health Financing
- Health services
research
- Big data analysis

Bachelor of Early Childhood Education (Birth to Five) (EDB001.1) – 3 years

Career Opportunities

- Director in an early childhood setting
- Early childhood education leader
- Early childhood teacher
- Kindergarten teacher
- Policy advisor
- Curriculum development



**5-stars for Education
graduate employment and
starting salaries**

One of Australia's top universities
for employment in Education.
(Good Universities Guide 2024)



Distinctive benefits

Gain more access to schools than
any other Teacher Education
course and lifelong professional
development support.



Flexible study

Combine on-campus, in-school
and online learning to suit you.

Work-integrated learning

During this course, students will undertake a minimum of **90 days of practical placement across a range of early childhood education settings**, allowing student the opportunity to **put theory into practice to graduate job-ready, confident and industry-connected.**



Level	Institution	Name	Code	Awarded	Qualification is approved	Institution Country	
ECT	University of Canberra	Graduate Certificate in Education (Early Childhood)		Any date if enrolled prior to 1 January 2017	National	Australia	
ECT	University of Canberra	Bachelor of Education in Early Childhood Teaching (Birth-8)	448AA	Any date if enrolled prior to 1 January 2017	National	Australia	
ECT	University of Canberra	Bachelor of Early Childhood and Primary Education	326JA	Any date if enrolled prior to May 2022	National	Australia	ACECQA assessed and approved this program on 28 October 2016.
ECT	University of Canberra	Bachelor of Early Childhood and Primary Education	326JA	Any date if enrolled prior to October 2029	National	Australia	ACECQA reassessed and approved this program on 26 September 2024. University of Canberra was formerly known by a different name: Canberra College of Advanced Education.
ECT	University of Canberra	Bachelor of Early Childhood Education (Birth to Five)	EDB001	Any date prior to December 2028	National	Australia	ACECQA assessed and approved this qualification on 21 November 2023.

Professional accreditation

This course is professionally accredited with the Australian Children's Education and Care Quality Authority (ACECQA).

Pathway Credit from ACECQA-approved Diploma of Early Childhood Education and Care. Students who are credited the 8 units for the diploma will enter directly into the bachelor's second year.

<https://www.acecqa.gov.au/>



Coursework and Practical Components

No existing EC Qualification

- Qualified in **three** years
- **95 days of placement** in a range of EC centres:
 - Birth -3 years and 3-5 years settings
- **23 units** across three years, **4 units** each semester, **8 units** per year (**3 units** in the final semester)
- ACECQA-qualified early childhood teacher



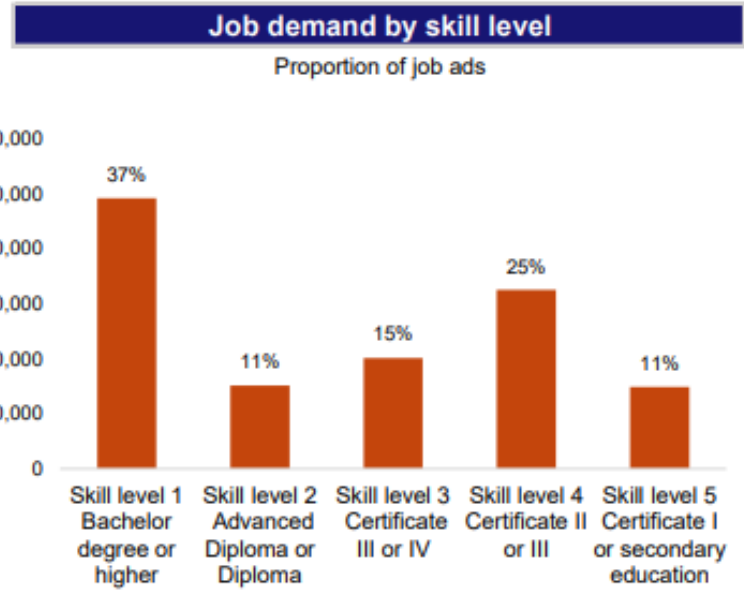
Jobs in high demand in Australia

Career Opportunities

Source: Jobs and Skills Australia (JSA), Internet Vacancy Index (IVI), seasonally adjusted data, September 2024



Source: JSA, IVI, seasonally adjusted data, Sep-2024



Source: JSA, IVI, seasonally adjusted data, Sep-2024

Source: Recruitment snapshot New South Wales:
<https://www.jobsandskills.gov.au/sites/default/files/2024-10/Combined%20-%20Recruitment%20snapshot%20New%20South%20Wales.pdf>



UC Sydney Hills – 2025 Admissions

webinar India market

Topics

- How to promote UCSH?
- Social Media & Marketing Guidelines

Guest Speaker:

Thais Stoduto

Marketing Manager - University
Partnerships- UCSH

Follow UC Sydney Hills on social media!

Stay up-to-date with campus news, student life and events by following us on Facebook and LinkedIn.

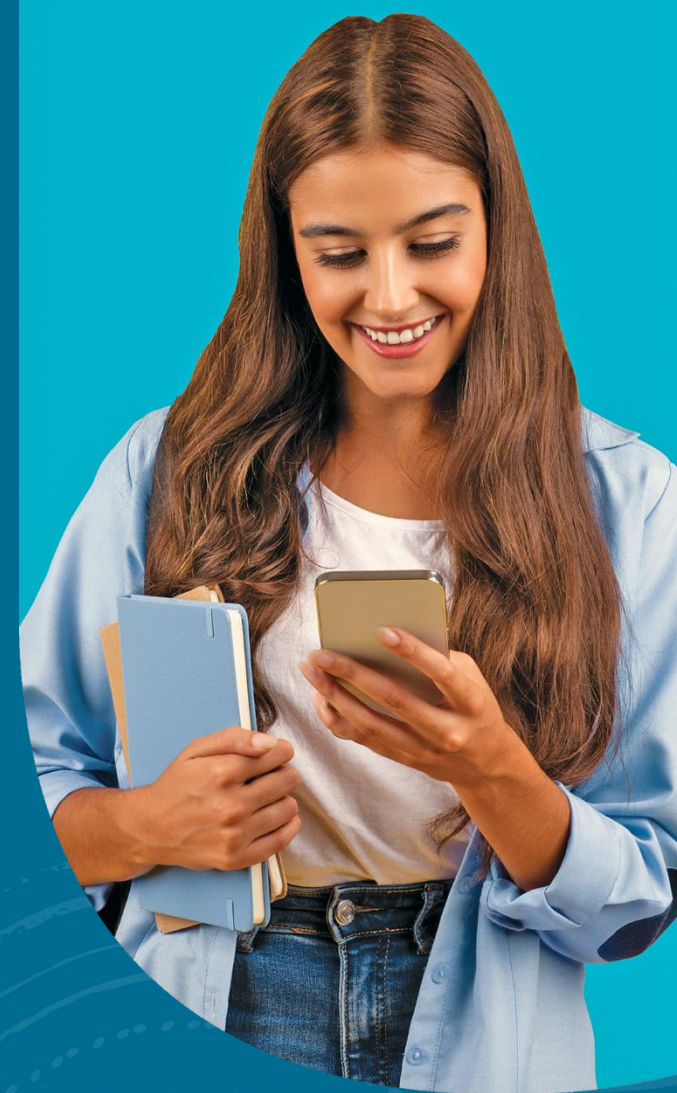
On Facebook



On LinkedIn



Reminder: When promoting us, tag the University of Canberra SYDNEY HILLS campus instead of the main University of Canberra pages.



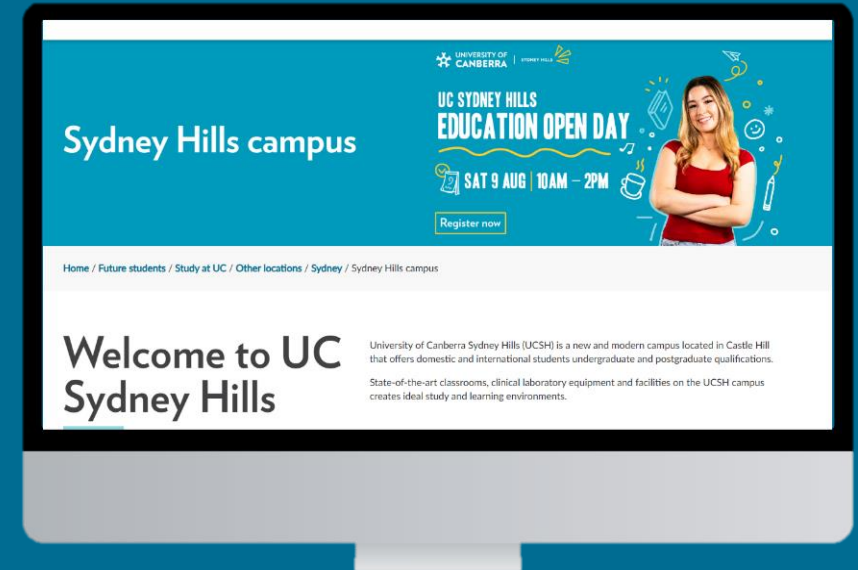
Or search on both channels for UC Sydney Hills

UC Sydney Hills website

Our university website is your go-to resource, providing up-to-date course information, entry requirements, and key dates.



www.canberra.edu.au/ucsh



Marketing support for agents

We offer a range of ready-to-use marketing assets to support your recruitment efforts:

- Social media tiles
- Email headers
- Flyers
- Banners
- Brochures
- Videos, images and others.

All resources are available via the UCSH Resource Library on StudyLink or the ECA Agent Portal:

www.eca.edu.au/agentportal.

Videos are also on the ECA/UCSH YouTube channel!



The flyer is for the University of Canberra International Scholarships. It features the U.C. logo in large yellow letters, with a rocket and stars to its right. Below the logo, the text 'INTERNATIONAL SCHOLARSHIPS' is written in white, bold, uppercase letters. The flyer lists three types of scholarships: Merit, High Achievers, and Excellence. Each scholarship type includes a description of eligibility and a discount percentage on tuition fees. The Merit Scholarship offers a 10% discount, the High Achievers Scholarship offers a 25% discount, and the Excellence Scholarship offers a 50% discount. The flyer is decorated with various icons like a paper airplane, stars, and a graduation cap.

UNIVERSITY OF CANBERRA | SYDNEY HILL

UC

INTERNATIONAL SCHOLARSHIPS

University of Canberra Merit Scholarships
Awarded to commencing international students applying to a U.C. undergraduate and postgraduate coursework degree at University of Canberra's Australian campuses.
10% off total tuition fees for the duration of your course.

University of Canberra High Achievers Scholarships
Awarded to commencing international students applying to a U.C. undergraduate and postgraduate coursework degree at University of Canberra's Australian campuses.
25% off total tuition fees for the duration of your course.

University of Canberra Excellence Scholarships
Awarded to commencing international students from specific countries as of institutional partners applying to a U.C. undergraduate and postgraduate coursework degree at University of Canberra's Australian campuses.
50% off total tuition fees for the duration of your course.

Marketing support for agents

You're also welcome to create your co-branded designs—just send them to us for review and approval before publication.

 For access or approvals, contact Thais Stoduto, Marketing Manager UCSH, at thais.stoduto@eca.edu.au.

UC Sydney Hills – 2025 Admissions

webinar India market

Topics

- Course Academic Requirements
- Application and GS process
- GS Interview
- How to apply – Study link System

Speaker:

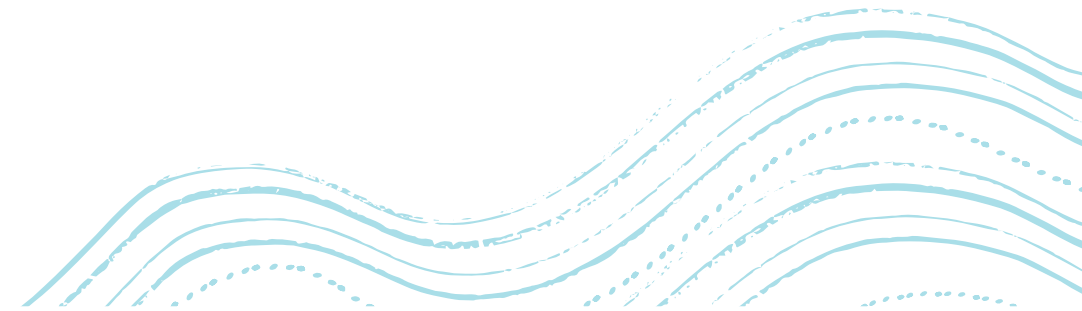
Charles Yang

Admissions Advisor

Future Students Office | University of
Canberra

Eligibility by citizenship

Scholarship	Eligible countries
UC Merit Scholarship 10% off tuition fee	All applicants
UC High Achievers Scholarship 20% off tuition fee	All countries not eligible for the Excellence Scholarship.
UC Excellence Scholarship 30% off tuition fee*	South Asia: Bangladesh Bhutan and Sri Lanka North Asia: China(Inc HK and Macao), Japan, South Korea, Mongolia. Southeast Asia: Indonesia, Malaysia, Philippines, Vietnam, Cambodia, Laos, Singapore, Thailand, Brunei.



2026 Courses Value per Semester & Scholarships available

COURSES / Semester Tuition fees	Value Full Semester	Value applied the UC Merit Scholarship (10% off Tuition fees)*	Value applied the UC High Achievers Scholarship (20% off Tuition fees)*
Bachelor of Early Childhood Education (Birth to Five) – 3 y Professional accreditation -ACECQA	A\$17,000	A\$15,300	A\$13,600
Bachelor of Nursing – 3 y Professional accreditation -ANMAC	A\$19,000	A\$17,100	-
Master of Public Health – 2y	A\$18,000	A\$16,200	A\$14,400

UC Merit Scholarship (10% off)

Scholarship is available to students from: all countries
Special criteria: Academic achievement (GPA 5 out of 7)

UC High Achievers Scholarship (20% off)

Scholarship is available to students from: all countries
Special criteria: Academic achievement (GPA 5.5 out of 7)

Full list for Excellence Scholarship please refer to:
<https://www.canberra.edu.au/scholarships/>

SSF \$273.75

** Student Services Amenities Fee (SSAF). Click [here](#) for more information.

2026 SCHOLRSHIPS

Awarded to commencing international students applying to study a course at UC, subject to meeting the UG and PG qualifying criteria.

2026 intakes:

SEM 1 - 16 FEB 2026

SEM 2 - 10 AUG 2026

2026 Courses Value per Semester & Scholarships available

COURSES / Semester Tuition fees	Value Full Semester	Value applied the UC Excellence Scholarship (30% off Tuition fees)*
Bachelor of Early Childhood Education (Birth to Five) – 3 y Professional accreditation -ACECQA	A\$17,000	A\$11,900
Bachelor of Nursing – 3 y Professional accreditation -ANMAC	A\$19,000	
Master of Public Health – 2y	A\$18,000	A\$12,600

UC High Excellence Scholarship (20% off)

Scholarship is available to students from selected countries:

Bangladesh, Bhutan, Sri Lanka, North Asian and Southeast Asian countries

Special criteria: Academic achievement (GPA 5.5 out of 7)

Full list for Excellence Scholarship please refer to:

<https://www.canberra.edu.au/scholarships/>

SSF \$273.75

** Student Services Amenities Fee (SSAF). Click [here](#) for more information.

2026 SCHOLRSHIPS

Awarded to commencing international students applying to study a course at UC, subject to meeting the UG and PG qualifying criteria.

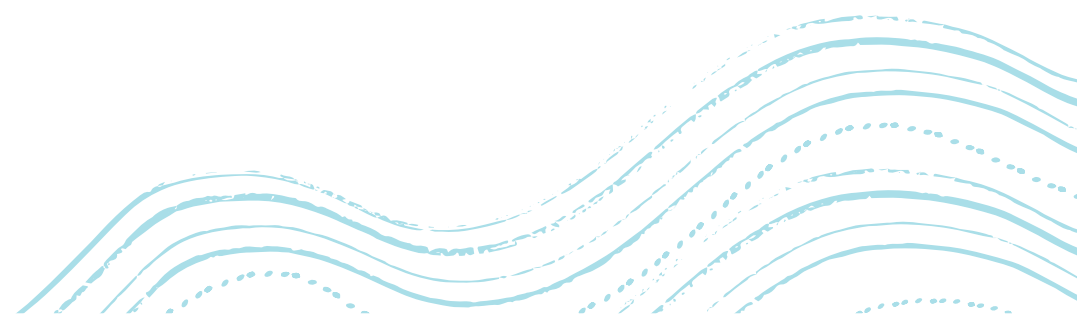
2026 intakes:

SEM 1 - 16 FEB 2026

SEM 2 - 10 AUG 2026

Assessable academic qualifications for scholarships

For UG program	For PG program
Secondary qualifications that are equivalent to Australian Year 12.	Undergraduate degree that is equivalent to AQF 7 Bachelor qualification
Post secondary qualifications that are equivalent to Australia Certificate IV, Diploma and Advanced Diploma.	
Note: in the case where student complete multiple qualifications that are assessable for scholarship, the scholarship eligibility will only be based on the most recent completed qualification.	



Academic requirement

India

Recognised test/qualification	CBSE	ISCE	State Board
Entry-Education	65%	65%	70%
Entry-Nursing	65%	65%	70%
10% scholarship	70%	70%	75%
20% scholarship	80%	80%	85%

For all boards, average score of English and the 3 best academic subjects.



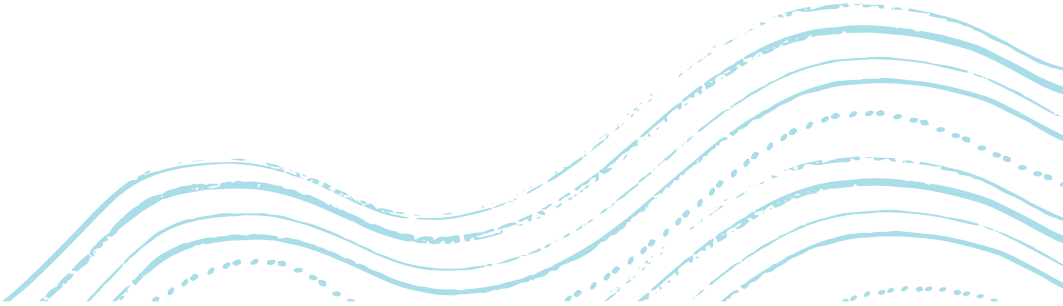
Academic requirement

Bangladesh

Recognised test/qualification	Bangladesh Higher Secondary Certificate GPA out of 5
Entry-Education	4
Entry-Nursing	4
10% scholarship	4.5
30% scholarship	4.75

Academic requirement

Bhutan	
Recognised test/qualification	Bhutan Higher Secondary Education Average grades across all academic subjects
Entry-Education	70%
Entry-Nursing	70%
10% scholarship	70%
30% scholarship	80%



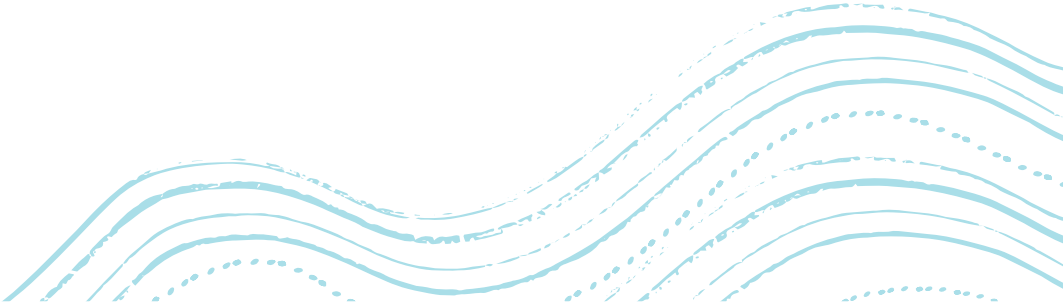
Academic requirement

Nepal

Recognised test/qualification	Higher Secondary Education Certificate(School Leaving Certificate) GPA	Proficiency Certificate Level in Nursing Average score
Entry-Education	2.80	70%
Entry-Nursing	2.80	70%
10% scholarship	3.00	75%
20% scholarship	3.50	85%

Academic requirement

Pakistan	
Recognised test/qualification	Higher Secondary School Certificate
Entry-Education	70%
Entry-Nursing	70%
10% scholarship	75%
20% scholarship	85%



Academic requirement

Sri Lanka

Recognised test/qualification	Sri Lanka General Certificate of Education Total score of best 3 A level subjects. A=4; B =3; C=2; D=1
Entry-Education	6
Entry-Nursing	7
10% scholarship	7
30% scholarship	9

Academic requirement

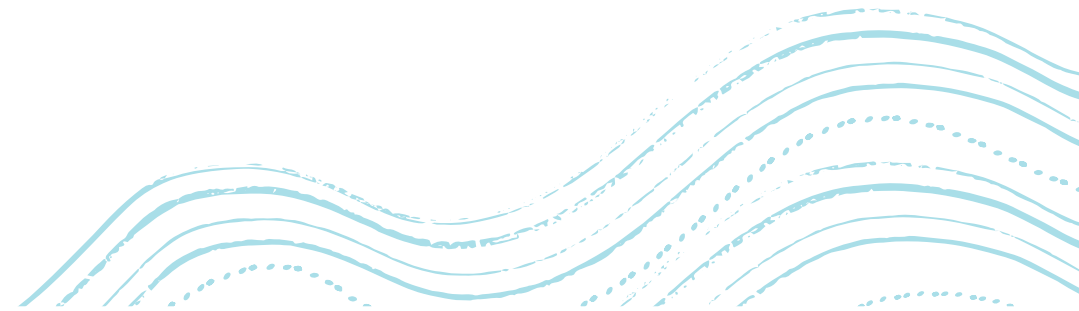
Other international secondary education certificates

Recognised test/qualification	UK GCE A level Best 3 AL subjects where A*=6, A=5, B=4, C=3, D=2, E=1	International Baccalaureate Total score
Entry-Education	8	26
Entry-Nursing	9	26
10% scholarship	8	26
20% or 30% scholarship	11	30

Academic requirement-UG programs

Onshore qualifications

	B of ECE	B of Nursing	10% scholarship	20% or 30% scholarship
Australian Year 12	ATAR 60	ATAR 65	ATAR 70	ATAR 80
Certificate III	Ungraded Pass or GPA 4.0	Ungraded Pass or GPA 4.0	N/A	N/A
Certificate IV	Ungraded Pass or GPA 4.0	Ungraded Pass or GPA 4.0	GPA 4.75	GPA 6.0
Diploma	Ungraded Pass or GPA 3.5	Ungraded Pass or GPA 3.75	Ungraded Pass or GPA 4.0	GPA 5.5
Advanced Diploma	Ungraded Pass or GPA 3.5	Ungraded Pass or GPA 3.75	Ungraded Pass or GPA 4.0	Ungraded Pass or GPA 5.25



Academic requirement-PG programs

Master of Public Health (Extension)

Qualification	Entry requirement	10% scholarship	20% or 30% scholarship
Australian or overseas qualification equivalent to AQF level 7 bachelor's degree	GPA 4.0/7.0 or 50%	GPA 5.0/7.0, or 65%	GPA 5.5/7.0, or 75%

The GPAs in this presentation are based on a 7-point scale, where 4 is pass, unless otherwise stated

The percentages in this presentation are on standard Australian grading scale where 50% is pass, unless otherwise stated.

Score or GPA from other grading scales need to be converted to the above scales before assessment



Admissions Requirement – English

Test types	Bachelor of Nursing*	Bachelor of Education	Master of Public Health
IELTS	7, no band less than 7	6.5, no band less than 6	
PTE-Academic	65, no band less than 65	58, no band less than 50	
TOFEL iBT	94, minimum scores of 24 in Listening, 24 in Reading, 27 in Writing and 23 in Speaking	79, minimum scores of 12 in Listening, 13 in Reading, 21 in Writing and 18 in Speaking	
OET	B, no subtest less than B	C, no subtest less than C	
Cambridge	N/A	176, no sub-score less than 169	
Onshore Study	N/A	Completed Dip, Adv. Dip, or 1-year full-time tertiary study	

*Combining two test sittings to meet nursing English requirement is subject to special approval.

Documents required to assess an application

	Onshore Applications	Offshore Applications
Compulsory when submitting the application	Passport and visas	Highest offshore academic qualification
	All onshore CoEs and transcripts/award certificates for student visa primary holders	Spouse and dependent child information if any
	Highest offshore academic qualification	Justification of gap activity if any
	Spouse and dependent child information if any	
	Justification of gap activity if any	
Can be provided at a later stage	English test result	English test result
		Passport

GS Assessment-Idea Profiles

Applicant type	Criteria	Idea profiles(proceed to provisional or conditional offer)	Risk indicators(more likely to be rejected)
Onshore	Visa type	500 visa primary holder	Bridging visa, 600 or 485 visa holder
	Comply with visa conditions	No history of breaching visa conditions	Studying lower-level courses than original course; onshore study gap
	Logical study	Upgrading from lower to higher level	Downgrading; course hopping(changing course before completion twice or over)
	Academic performance	Full-time enrolled with good academic standing	Part-time enrolled with no approval; high fail/withdraw rate; exclusion
Offshore	Academic performance	Has at least English and 3 academic subjects in Year 12 with good score (for Indian school leavers)	Failed subjects in Year 11 or 12; less than 3 academic subjects.(for Indian school leavers)
	Study gap	Under 12 months, or over 12 months but justifiable(proper employment with evidence).	Over 12 months unsatiable gap.
	Background	Relevant background	Long irrelevant study or employment without justifiable motivation of change field.
	Marriage	Not marriage for UG applicant and no recent marriage for PG applicant	Married UG applicant or recently married PG applicant (within 1 year)

Who needs to complete the GS Survey

Applicant location	Country/Region Risk Level	Assessment required
Onshore	Applicant from all countries except in below situation.	GS questionnaire Financial assessment
	Current 500 visa primary holder, applying for a course that is in the same field and higher-level of previous course(e.g. Dip Nursing to B Nursing). The visa was granted for currently enrolled program.	No GS Survey required
Offshore	High risk countries/regions: India, Nepal, Bangladesh, Pakistan, Kenya, Nigeria etc.	GS questionnaire Financial assessment Phone interview
	Medium risk countries/regions : Sri Lanka, Philippines, Vietnam, Mainland China etc.	GS questionnaire Financial assessment May be waived for good profiles
	Low risk countries/regions: Brazil, Colombia, Hong Kong, Thailand	No GS Survey required

This is a general guide only. Because of the complexity of personal circumstances, required documents/action for a student may be different in GS assessment.

Genuine Student (GS) Online Survey and Test Form



ONLINE GS ASSESSMENT

Hi **ABISHAM**,

Thank you for your recent application to study Bachelor of Nursing at the University of Canberra.

In accordance with University Guidelines, we are required to undertake a Genuine Student (GS) assessment of your application. This requires you to complete an online GS Form which can be accessed via the following link:

Link: <https://student-canberra.studylink.com/customform.cfm>
Security code:

The attached **Genuine Student Test questionnaire** must be completed and uploaded in your GS survey in the Statement of Purpose section.

Please complete the GS Form via the above link within 10 working days. If you require more time to complete the GS assessment, please let us know by return email.

Why do I need to complete this form?

The University of Canberra undertakes assessments of all prospective student applications in accordance with the Australian Government Department of Home Affairs' (DHA) Genuine Student (GS) requirements. A student's Confirmation of Enrolment (CoE) will not be issued until they have cleared the University's GS assessment.

More information on GS requirements can be found at:

- Department of Home Affairs website.
- University of Canberra website - GS Information.

If you require any further assistance, please contact us by replying to this email.

Admissions Office
University of Canberra

WELCOME

Applicant Name:
Program Applied For: Bachelor of Nursing
The above named applicant has applied to University of Canberra. Additional information is required for this application.

Thank you for using the University of Canberra on-line portal.

SUPPLEMENTARY FORM - GENUINE STUDENT ASSESSMENT FORM

Intake: Semester 1 - Commencing 3 February 2025 Campus: UC - Sydney Hills Campus

STUDENT DETAILS

Given Name(s):
Family Name:
Have you been known by another name? Yes No
Date of Birth:
Gender: Female Male
Email Address:
Citizenship:
Passport Number:
Provide evidence of passport:

Drag and drop or click here to browse the file that you wish to attach to your application

 Yes No
Do you have citizenship in more than one country?
 Yes No
Have you had a visa refusal or visa cancellation or been removed from any country including Australia?

Genuine Student (GS) Online Survey and Test Form

Genuine Student Test

Full Name	
Student ID	
Course Name	

Please answer the below questions, 150 words maximum per each question. Please avoid handwriting on the fillable PDF and instead complete it electronically. This document is to be filled by the student.

Provide details of your current circumstances, including ties to family, community, employment, and economic circumstances.

Explain the reasons you wish to study your chosen course at the University of Canberra (UC)?

What is your understanding of the requirements of your chosen course at UC and studying and living in Australia?



DISTINCTIVE BY DESIGN

Explain how completing your chosen UC course will be of benefit to you?

Give details of any other relevant information the applicant would like to include.

Provide a detailed history of your study record in Australia from the date of first arrival. (If applicable)

GS assessment-Financial

Who can be the sponsors?

1. Parents/Parents In laws
2. Spouse/Self
3. Siblings (does not include cousins)
4. Maternal and paternal grant parents
5. Maternal and Paternal aunt/uncle

You need to provide proof of relationship and sponsor letter

***Parents should always sponsor major source of the funds**

What is required

1. Sufficient fund

Expense Types	Amount needed	Note
Tuition fee (1 year)	Education: 34000 AUD Nursing: 38000 AUD Public Health: 36000 AUD	If scholarship is granted, calculate with reduced tuition fee
Travel	2000 AUD for most offshore applicant	May vary depending on current location
Living Cost	29710 AUD	May increase with CPI
Total Required	65710 AUD-69710AUD	Based on Oct 2025 data

2. Sufficient on-going income

Your sponsor will need to have an annual income of at least A\$87856 in the 12 months immediately before you apply

*Amounts indicated are for applicant in 2024, data from DHA website:

[Subclass 500 Student visa \(homeaffairs.gov.au\)](https://www.homeaffairs.gov.au)

GS assessment-Financial

Accepted documents as income proof

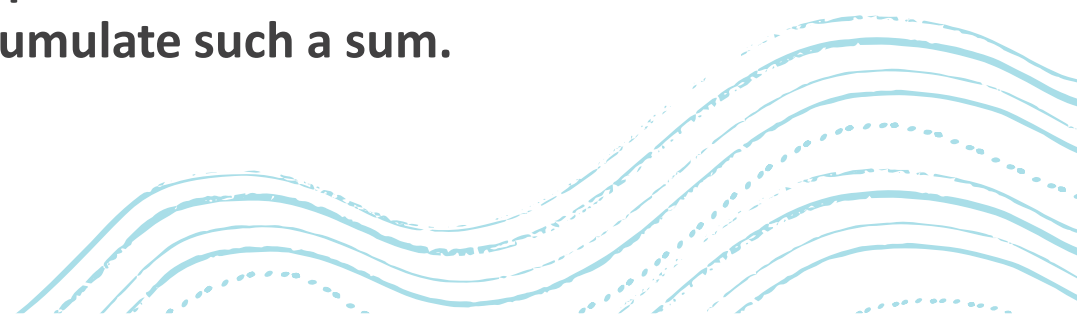
	Accepted document as proof :	Is it Mandatory?
Income from salary	3 years income Tax Returns.	Yes (India only)
	From 16 (last 3 years)	Yes. If Tax Returns is not available for India.
	Bank statements from last 3 months/ letter from employer.	Yes, Countries Apart from India.
Income from Business	Business Registration certificate.	Yes.
	Bank statements from last 3 months.	Yes.
	Tax Return / Tax Computation for last 2 years.	Yes (India only).
Income from Rent	Proof of ownership of property.	Yes.
	Lease agreement.	Yes.
	Tax Returns- previous 2 years.	Yes. (India only)
Income from Pension	Pension order.	Yes.
	Bank Statements indicating the Credit of Pension- last 3 months.	Yes.
Income from Agriculture	Proof of Ownership of the land / lease agreement.	Yes.
	Income certificate from Tehsildar.	Yes. (India only)
	Tax Returns – previous 2 years	Yes. (India only)

GS assessment-Financial

Accepted documents as proof of available funds

Type of fund	Accepted document as proof :
Saving Account	Bank Statement for the last 3 months
	For recent large deposit, source of funds is required
Fixed Term Deposit	Copies of fixed term deposit
	Letter from financial institute confirming the deposit
Education Loan	Sanction letter with collateral details
	Valuation report of property as collateral for the above loan

Note: proof of income is still required even students have provided evidence of sufficient fund. This is to justify how students and their sponsor accumulate such a sum.



DO'S AND DON'TS - Interviews



- Be specific and honest.
- Answer with personal examples
- Listen to the questions carefully and then respond after understanding the question.
- Admit when you don't understand the question and ask the officer to repeat.
- Ask the interviewer to arrange another call if it is not a good time.



- Use memorized or vague answers
- Read prepared material.
- Say agent (or parents, relatives) arranged everything.
- Provide responses that contradict to the documents or information you provided.
- Repeatedly postpone the interview.

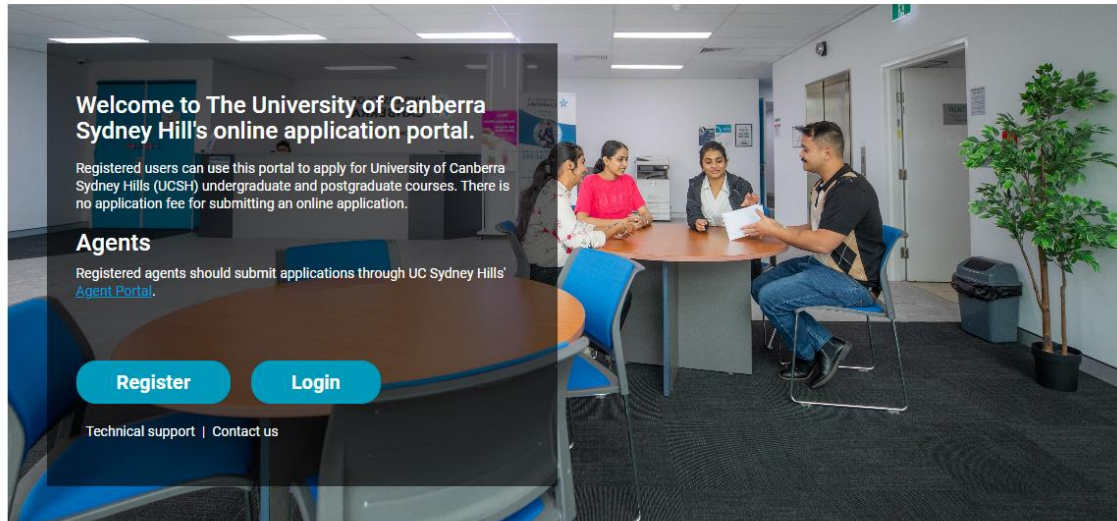
How to apply?



UNIVERSITY OF
CANBERRA

SYDNEY HILLS

Register or Log in



You can apply for UCSH

StudyLink portal <https://partner.studylink.com/partner/login/?next=/>

If you've already set up your StudyLink user account, please continue using your current login to access the portal.

<http://partner.studylink.com>

. If you don't have access, have forgotten your login details, or have any technical issues or problems please email

support@studylink.com

for assistance.

If you haven't used StudyLink previously,

- Go to <https://partner.studylink.com/>
- Enter username <xxxxxxx>
- Click 'I forgot my password'
- Enter <email address> and go back to your inbox for an activation link
- Follow the instructions to set up your account (It's important you choose a new username and password and enter a unique email address when you set up your user account)
- Finally, select "default branch" and you're ready to go!

You'll find the Agent Portal User Guide and Quick Reference Guide [here](#). If you'd like to enquire about one-on-one training, please contact support@studylink.com for assistance



How to apply?

Stage 1 : Complete the application form

- You can lodge student's application to Study Link [Apply Online](#)

Stage 2: Provide certified documents

- Attach certified copies of all academic transcripts and award certificates, passport and evidence of English score.
- All the copies of CoEs

Stage 3: Submit your application

- Submit your completed application through the platform or if you need support email to applyuc@eca.edu.au



Log in to StudyLink Connect's Partner Portal

Username *

Password *

[Forgot your password?](#)

Remember me

[Log In](#)

OR

Not a StudyLink Connect Recruitment Partner?

[Sign Up](#)

Follow us on social








Need help? [Contact us](#)



How to apply?

Important note:

- If you are the agent of both UC and ECA, please select UC course codes when lodging application.
- This is to ensure you are better supported and reduce confusion.

Course Code	Course Name	Award Type	Provider	
HLM102 INT 	Master of Public Health (Extended)	Masters		
UCSH-MPH	Master of Public Health (Extended)	Masters		

Types of offer

Provisional offer

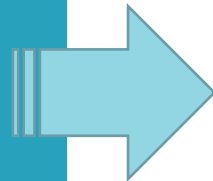
- Need to complete a GS assessment
- Submit online GS survey form

Provisional Conditional offer

- Need to complete a GS assessment
- Submit online GS survey form
- Need to satisfy the conditions outlined

Conditional offer

- Need to satisfy the conditions outlined



Unconditional Offer

- Can accept an offer
- Make acceptance fee payment

Important dates SEM 1, 2026 Intake

	OFFSHORE	ONSHORE
SEM 1, 2026 Commencement Date	16 February 2026	
Last day of Application Submission	15 November 2025	20 January 2026
Deadline for international offshore applicants to provide additional documents including Genuine Student Survey.	25 November 2025	-
Last day of Acceptance & *Payment	15 December 2025	10 February 2026



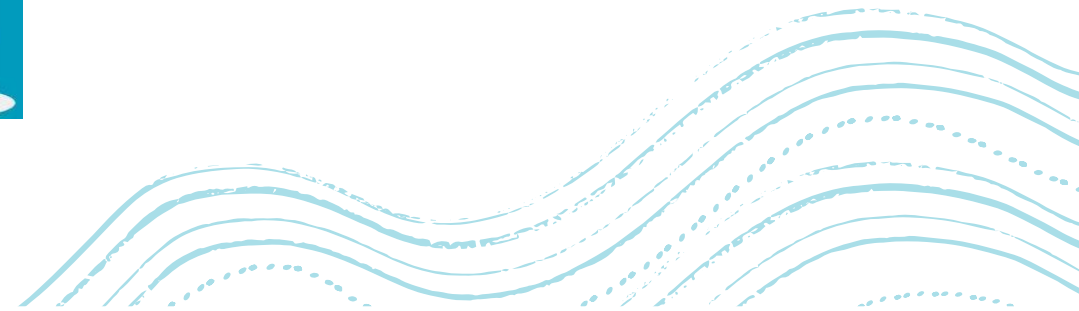
UNIVERSITY OF
CANBERRA

| SYDNEY HILLS

APPLICATIONS OPEN SEMESTER 1, 2026



Bachelor of Nursing
Bachelor of Early Childhood Education
Master of Public Health (Extended)





Thank you !!